

GUTTER PROTECTION MADE SIMPLE.

NOTES

[illegible]

Leaf Smart™ Installation

Replacing Strap Hangers.....	5
Leaf Smart™	6

Navigating This Manual

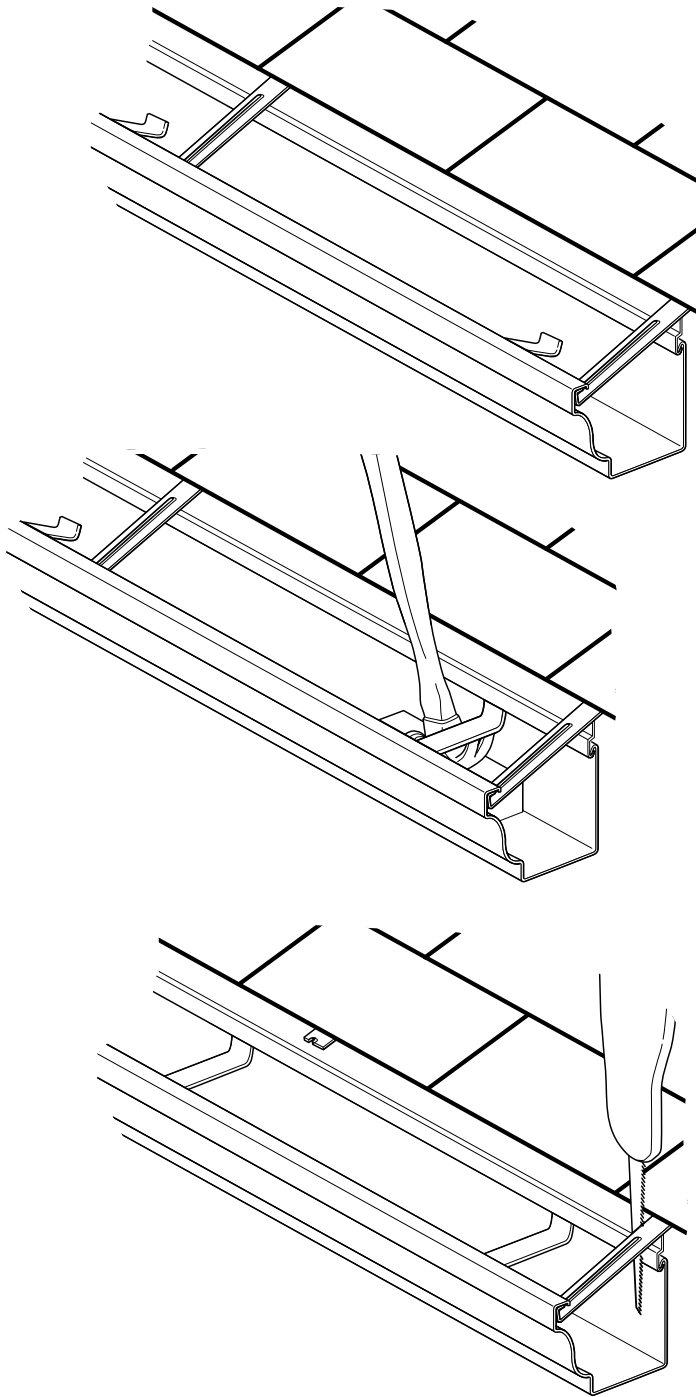
To go directly to your desired section, click on the subject in the Table of Contents.

NOTES

[illegible]

Replacing Strap Hangers

PRODUCTS CAN NOT BE INSTALLED OVER STRAP HANGERS

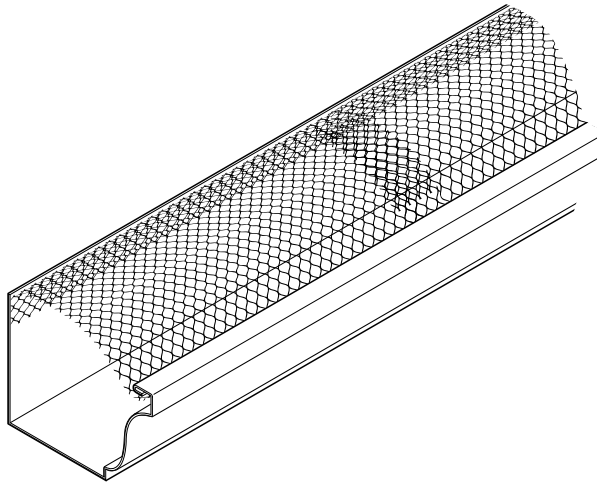
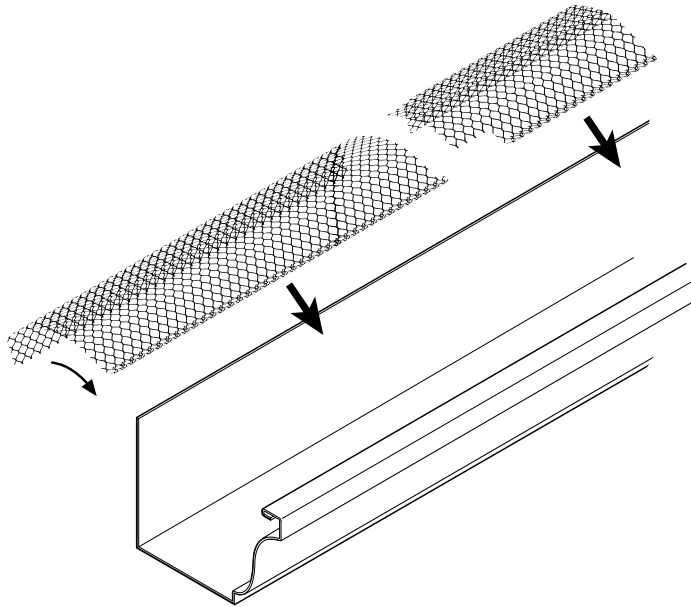


Replacing strap hangers or bar hangers on existing gutters

- Hook front of snap-in (free float) gutter hangers (OG13LR5) into front lip of gutters every 24" along length of gutter.
- Position block of wood inside gutter at hanger location. Using claw hammer, apply pressure to bottom of each hanger until hanger engages in existing roof apron or fascia apron. Remove wood block.
- For strap hangers, use a metal cutting tool, such as a reciprocating saw, to cut old strap hangers at drip edge and remove from gutter system.
- For bar hangers, remove nail or screw and remove bar hanger from gutter system.

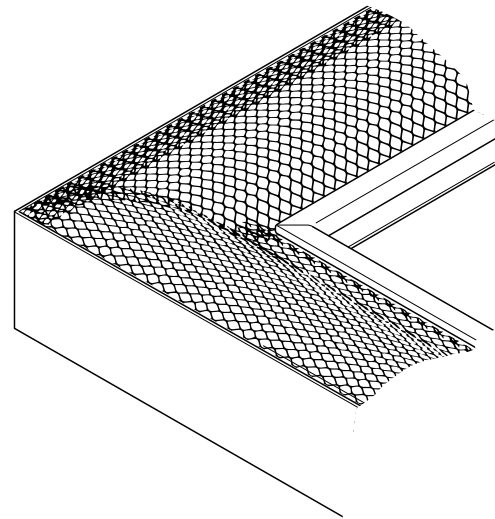
Leaf Smart™

INSTALL ON FLAT HANGERS, SPIKE/FERRULE OR ZIP HANGERS




Prep: Clean out gutters and secure firmly to home. Tighten or replace hangers as needed.

- Place one end of the leaf guard against the inside wall of the gutter (the side that is flush with the home). Leaf guard goes over hangers.
- Without creating a crease or fold in the leaf guard, push/slide the other end under the front lip of the gutter. The panel should snap into place and stay secure via a pressure/tension fit.
- Overlap with the product 1" factory edge over the corresponding piece by 1".
- For inside and outside corners, cut the leaf guard 45° and install with a slight overlap.



[illegible]



We're not sending a man to the moon. We're preventing leaves from landing in your gutter. For effective, affordable gutter protection, there's **Leaf Smart by Ply Gem**. Sometimes the simplest solutions are the best.



888-9PLYGEM

2600 Grand Blvd., Suite 900, Kansas City, MO 64108

© 2021 Ply Gem Industries, Inc., part of **Cornerstone Building Brands**, Inc. ALL RIGHTS RESERVED.

7610219991101/MS/CG/1021

[< PREVIOUS PAGE](#) | [MANUAL COVER](#) | [MANUAL CONTENTS >](#)