



Trim Coil Selector

VARIFORM[®]
by  **Ply Gem**

Cuts Clean, Bends Sharp, Lays Flat

Variform® by Ply Gem Trim Coil meets the highest aluminum specifications for grade, hardness, temper (flexibility), and gauge (thickness). Tension-leveled to create a dimensionally accurate product with uniform surfaces and excellent forming characteristics, Variform Trim Coil is known for straight, consistent edges and an attractive finish.

During manufacturing, controlled cleaning, pre-coating and heating processes ensure the coatings bond tightly to the raw aluminum for superior adhesion and durability. Available in over 300 colors, Variform Trim Coil protects your home, creates a finished, clean appearance, and matches virtually every siding and trim product color produced by the industry.

	Two-Coat Acrylic Finish		PVC Striated Finish		DuraPro®
Gauge:	.019" Standard	.024" Ultra	.019" Standard	.024" Ultra	.019"
Colors:	300+	Limited	180+	Limited	White
Widths:	24", 14"	24"	24"	24"	24"
Lengths:	250', 150'	50'	50'	50'	50'

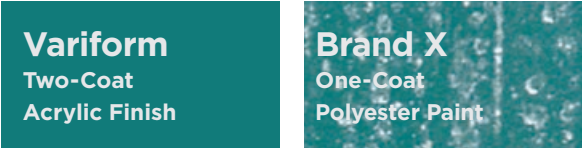
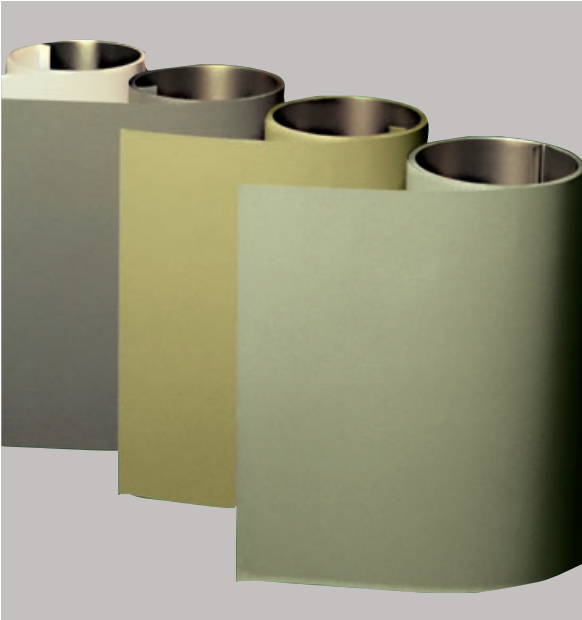
Three Finish Coat Options

TWO-COAT ACRYLIC. Providing a smooth, painted finish, Variform’s two-coat acrylic trim coil ranks among the industry’s best. An adhesive primer and durable top coat deliver superior weathering and stain resistance for years to come.

PVC STRIATED. Looking for a unique woodgrain finish? Take a long look at Variform by Ply Gem PVC Striated Trim Coil. The aluminum is coated with high-quality, thick PVC (vinyl) applied by a proprietary process that striates paint to build a realistic, woodgrain finish. Our PVC striated trim coil repels air pollutants, sun and water damage over the long haul. Choose from a variety of shades to complement our vinyl and aluminum products.

DURAPRO®. Infused with BASF PolyCeram® 580¹, DuraPro is a “tough as nails” coating. Thick, durable and available only in white, this trim coil showcases a beautiful satin-textured finish. Pencil marks and fingerprints wipe off. Exceptional dent and scratch resistance properties prevents waste. DuraPro is the choice of contractors.

¹PolyCeram 580 is a registered trademark of BASF Corporation.



Two-Coat Acrylic Finish gives Variform Trim Coil an ultra-thick surface that resists scrapes and scratches.

Physical Characteristics and Manufacturing Data

Coating:	Two-Coat Acrylic Finish	PVC Striated Finish	DuraPro®
Gloss:	10 – 14 @ 60°, ASTM D 523-80	22-27 @ 60°, ASTM D 523-80	20-40 @ 60°, ASTM D 523-80
Flexibility:	No removal of finish with 600 Scotch Tape on a 2T bend; NCCA 11-19	No removal of finish with 600 Scotch Tape on a 2T bend; NCCA 11-19	No removal of finish with 600 Scotch Tape on a 2T bend; NCCA 11-19
Pencil Hardness:	HB-H Eagle Turquoise, NCCA 11-12	2B, Eagle Turquoise, NCCA 11-12	HB-H Eagle Turquoise, NCCA 11-12
Adhesion:	Excellent, ASTM D 3359-83	Excellent, ASTM D 3359-83	Excellent, ASTM D 3359-83
Impact:	No visual cracking or finish release when subjected to impact in inch pounds equal to one and one half times the metal thickness. NCCA 11-6	No visual cracking or finish release when subjected to impact in inch pounds equal to one and one half times the metal thickness. NCCA 11-6	No visual cracking or finish release when subjected to impact in inch pounds equal to one and one half times the metal thickness. NCCA 11-6
Humidity Resistance:	No loss of gloss, cracking or peeling after 1,000 hours @ 100% relative humidity. ASTM D 2247-86A	No loss of gloss, cracking or peeling after 1000 hours @ 100% relative humidity. ASTM D 2247-86A	No loss of gloss, cracking or peeling after 1,000 hours @ 100% relative humidity. ASTM D 2247-86A
Salt Spray Resistance:	No under-cutting of film from edges in excess of 1/16" or face blistering after 3,000 hours at 5% neutral salt spray. ASTM B 117-85	No under-cutting of film from edges in excess of 1/16" or face blistering after 1,000 hours at 5% neutral salt spray. ASTM B 117-85	No under-cutting of film from edges in excess of 1/16" or face blistering after 3,000 hours at 5% neutral salt spray. ASTM B 117-85
Exterior Exposure:	a. Fade: Max. #5 after 10 years at 45° south Florida exposure after removal of external deposits. ASTM D 2244-85 b. Chalk: Max. #8 rating on all colors with the exception of white within 10 years at 45° south Florida. ASTM D 659-86	a. Fade: Max. #5 after 10 years at 45° south Florida exposure after removal of external deposits. ASTM D 2244-85 b. Chalk: Max. #8 rating on all colors with the exception of white within 10 years at 45° south Florida. ASTM D 659-86	a. Fade: Max. #5 after 10 years at 45° south Florida exposure after removal of external deposits. ASTM D 2247-86A b. Chalk: Max. #8 rating on all colors with the exception of white within 10 years at 45° south Florida. ASTM D 659-86
Dry Film Thickness:	.75 – .90 mils	3.3 – 3.7 mils	.70 – .80 mils
Solvent Resistance:	100+MEK rubs Meets the performance requirements of AAMA 1402-86	MEK rubs none Meets the performance requirements of AAMA 1402-86	100+MEK rubs Meets the performance requirements of AAMA 1402-86



Details, details, details.

The Variform brand has all the accessories and details you need to complete your project, including corners, trim, guttering, soffits, door surrounds and fascia. The Variform brand is endorsed by Ply Gem Residential Solutions, a division of Cornerstone Building Brands, the nation's leading exterior building products company. As a result, we can provide you with a wide range of enhancements that complement Variform products – Ply Gem gutter protection, Ply Gem Steel Siding, Ply Gem Trim and Mouldings, and Ply Gem Shutters and Accents. They all work together so that you can have worry-free maintenance and beauty down to the last detail.

Visit **variform.com** to design your dream home.



Vinyl Siding and Accent Panels



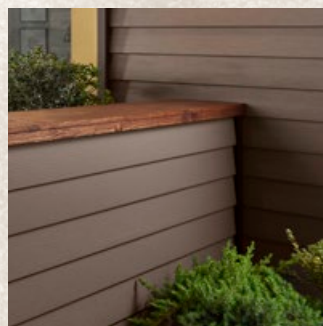
Gutter Protection



Rainware, Fascia, Soffit



Ply Gem Fence and Railing



Ply Gem Steel Siding



Ply Gem Shutters and Accents

2600 Grand Blvd., Suite 900, Kansas City, MO 64108
(888) 9PLYGEM | variform.com



*Consult the VSI Website at vinylsiding.org for current list of certified products and colors. Cornerstone Building Brands reserves the right to alter, modify or delete items from time to time without notice. Due to printing limitations, colors may not be exactly as shown. Contact your sales representative for actual product and color samples. Variform, and the Variform logo are trademarks of Variform, Inc. © 2022 Variform®, part of **Cornerstone Building Brands** Inc. ALL RIGHTS RESERVED. 3301070161103/RevA/MS/CG/0122

VARIFORM®

AMBER	ANTIQUE CINNABAR	AUTUMN BEIGE	BAYOU	BRIARWOOD	CENTURY BROWNSTONE	CLASSIC CREAM	DEEP BRUNSWICK	DOVER WHITE
SPG24T 254-P SPG24 254-A	SPG24T 802-P SPG24 802-A	SPG24T YP-P SPG24 YP-A	SPG24T 145-P SPG24 145-A	SPG24T 100-P SPG24 100-A	SPG24T 803-P SPG24 803-A	SPG24T 30-P SPG24 30-A	SPG24T 812-P SPG24 812-A	SPG24T 04-P SPG24 04-A
FLINT	GEORGIAN GREY	HAZELNUT	HERITAGE LINEN	IRISH THISTLE	ISLAND PEARL	MEDITERRANEAN PALM	MUSKET BROWN	NATURAL ALMOND
SPG24T YH-P SPG24 YH-A	SPG24T 02-P SPG24 02-A	SGI24T 59-P SGI24 59-A	SPG24T Y6-P SPG24 Y6-A	SPG24T 510-P SPG24 510-A	SPG24T 31-P SPG24 31-A	SPG24T IC-P SPG24 IC-A	SGI24T 59-P SGI24 59-A	SPG24T 53-P SPG24 53-A
OLD DUBLIN	PEWTER	RICH MOCHA	SAGEBROOK	SANDTONE	SANDY TAN	SAVANNAH BLUE	SEDONA RED	SILVER MIST
SPG24T 813-P SPG24 813-A	SPG24T 090-P SPG24 090-A	SPG24T 22-P SPG24 22-A	SPG24T 170-P SPG24 170-A	SPG24T 39-P SPG24 39-A	SPG24T A7-P SPG24 A7-A	SPG24T YJ-P SPG24 YJ-A	SPG24T 290-P SPG24 290-A	SPG24T C3-P SPG24 C3-A
SOUTHERN CYPRESS	SPANISH OLIVE	STONE MOUNTAIN CLAY	TEAK	TWILIGHT SHADOW	URBAN IRON	WEDGEWOOD	CABIN CEDAR (BRIARWOOD)*	COASTAL BLUE*
SPG24T 573-P SPG24 573-A	SPG24T 511-P SPG24 511-A	SPG24T A5-P SPG24 A5-A	SPG24T IF-P SPG24 IF-A	SPG24T 144-P SPG24 144-A	SPG24T 814-P SPG24 814-A	SPG24T 390-P SPG24 390-A	SPG24T 100-P SPG24 100-A	SGI24 YS-A
COTTAGE GRAY (FLINT)*	HEARTHSTONE BROWN*	NORTHERN OAK*	REDWOOD*					
SPG24T YH-P SPG24 YH-A	SGI24T 275-P SGI24 275-A	SPG24T A5-P SPG24 A5-A	SPG24 E9-A					

INDUSTRY COLORS

ANTIQUE IVORY	BLACK	BLACK/MUSKET BROWN	BLACK/ROYAL BROWN	BLACK/WINDOW WHITE	BRANDY	CAREY TAN	COCOA BEAN	COPPER PENNY
SGI24 224-A	SGI24T 33-P SGI24 33-A	SGI24 BM-A	SGI24 BR-A	SGI24 33-A	SGI24 YR-A	SGI24 225-A	SGI24 P3-A	SGI24 135-A
CRANBERRY	DARK BRONZE	DARK BRONZE/ WINDOW WHITE	EVENING GRAY	FOREST	GRECIAN GREEN	HARBOUR	IMPERIAL BROWN	LONDON BROWN
SGI24 223-A	SGI24T JS-P SGI24 JS-A	SGI24 JS-A	SGI24 YS-A	SGI24T 70-P SGI24 70-A	SGI24T 262-P SGI24 262-A	SGI24T YV-P	SGI24 226-A	SGI24T JN-P SGI24 JN-A
MUSKET BROWN	NORWEGIAN WOOD	PEARL GRAY	ROYAL BROWN	TERRA COTTA	TERRATONE	TUXEDO GRAY	WINE	
SGI24T 59-P SGI24 59-A	SGI24T A0-P SGI24 A0-A	SGI24 227-A	SGI24 DP-A	SGI24T ID-P SGI24 ID-A	SGI24T 34-P SGI24 34-A	SGI24T 228-P SGI24 228-A	SGI24T YW-P	

CERTAINTEED®

ARBOR BLEND*	AUTUMN RED	AUTUMN YELLOW	BUCKSKIN	CANYON BLEND*	CHARCOAL GRAY	COLONIAL WHITE	CYPRESS	DESERT TAN
SWC24T E4-P SWC24 E4-A	SWC24 347-A	SWC24T AY-P SWC24 AY-A	SWC24T BU-P SWC24 BU-A	SWC24 WB-A	SWC24T 090-P SWC24 090-A	SWC24T 04-P SWC24 04-A	SWC24T K2-P SWC24 K2-A	SWC24T R3-P SWC24 R3-A
FLAGSTONE	FOREST	FRONTIER BLEND*	GLACIER BLEND*	GRANITE GRAY	GREEN TEA	HEARTHSTONE	HERITAGE CREAM	HERRINGBONE
SWC24T RA-P SWC24 RA-A	SWC24 346-A	SWC24 E3-A	SWC24 A4-A	SWC24T 35-P SWC24 35-A	SWC24 344-A	SWC24 348-A	SWC24T A9-P SWC24 A9-A	SWC24T C3-P SWC24 C3-A
IVY GREEN	LIGHT MAPLE	LINEN	MEADOW BLEND	NATURAL CLAY	OXFORD BLUE	PACIFIC BLUE	SABLE BROWN	SANDPIPER
SWC24T T6-P SWC24 T6-A	SWC24T N5-P SWC24 N5-A	SWC24 K6-A	SWC24T 276-P SWC24 276-A	SWC24T A5-P SWC24 A5-A	SWC24T A6-P SWC24 A6-A	SWC24T T8-P SWC24 T8-A	SWC24T T7-P SWC24 T7-A	SWC24 AS-A
SANDSTONE BEIGE	SAVANNAH WICKER	SEAGRASS	SILVER ASH	SNOW	SPRUCE	STERLING GRAY	SUEDE	TERRA COTTA
SWC24 HG-P SWC24 HG-A	SWC24T A7-P SWC24 A7-A	SWC24 510-A	SWC24T S5-P SWC24 S5-A	SWC24T 04-P SWC24 04-A	SWC24 345-A	SWC24T A4-P SWC24 A4-A	SWC24 AT-A	SWC24T ID-P SWC24 ID-A
TIMBER BLEND	WARM SAND	WEATHERED BLEND*						
SWC24 A5-A	SWC24T C1-P SWC24 C1-A	SGI24T 275-P SGI24 275-A						

EXTERIOR PORTFOLIO®

ASPEN WHITE	BONE	CANYON	CARBON	CLAY	COUNTRY BEIGE	CYPRESS	DRIFTWOOD	ESPRESSO
SCR24T 04-P SCR24 04-A	SCR24T C3-P SCR24 C3-A	SCR24T IF-P SCR24 IF-A	SCR24T 866-P SCR24 866-A	SCR24T CT-P SCR24 CT-A	SCR24T CH-P SCR24 CH-A	SCR24T DS-P SCR24 DS-A	SCR24T CZ-P SCR24 CZ-A	SCR24T 711-P SCR24 711-A
GRAPHITE	GREYSTONE	HARBOR BLUE	HILLSIDE GREEN	HONEY OAK	INDIGO	LIGHTHOUSE RED	METROPOLITAN GREY	MOCHA
SCR24T DK-P SCR24 DK-A	SCR24T CJ-P SCR24 CJ-A	SCR24T CI-P SCR24 CI-A	SCR24T 170-P SCR24 170-A	SCR24T BU-P SCR24 BU-A	SCR24T 865-P SCR24 865-A	SCR24T DN-P SCR24 DN-A	SCR24T 090-P SCR24 090-A	SCR24T 22-P SCR24 22-A
NANTUCKET	NUTMEG	RYE	SADDLE	SLATE	WHEAT			
SCR24T 868 SCR24 868-A	SCR24T DM-P SCR24DM-A	SCR24T CW-P SCR24 CW-A	SCR24T 39-P SCR24 39-A	SCR24T DF-P SCR24 DF-A	SCR24T DT-P SCR24 DT-A			

PROVIA®

ANTIQUE WHITE	ASPEN	BIRCHWOOD	CAMEL	CANYON	CHATEAU	CLAY	CREAM	GRANITE
SHL24T L1-P SHL24 L1-A	SHL24T 170-P SHL24 170-A	SHL24T HG-P SHL24 HG-A	SHL24 GK-A	SHL24T 100-P SHL24 100-A	SHL24T 39-P SHL24 39-A	SHL24T A5-P SHL24 A5-A	SHL24T A9-P SHL24 A9-A	SHL24T 090-P SHL24 090-A
GRAY	LINEN	MIST	MOCHA	MOUNTAIN BERRY	PEWTER	PRAIRIE	SAGE	SAND
SHL24T YB-P SHL24 YB-A	SHL24T YT-P SHL24 YT-A	SHL24T K6-P SHL24 K6-A	SHL24 E3-A	SHL24T T2-P SHL24 T2-A	SHL24T YH-P SHL24 YH-A	SHL24 K5-A	SHL24T K2-P SHL24 K2-A	SHL24T 22-P SHL24 22-A
SANDALWOOD	SIENNA	STONE	WHITE					
SHL24T H8-P SHL24 H8-A	SHL24T K7-P SHL24 K7-A	SHL24 160-A	SHL24T 04-P SHL24 04-A					

ROYAL®

BARK	BLUE GREY	BROWNSTONE	COCOA	CYPRESS	FLAGSTONE	GRANITE	HARVARD SLATE	HEATHER
SRL24T 711-P SRL24 711-A	SRL24T H2-P SRL24 H2-A	SRL24T CT-P SRL24 CT-A	SRL24T 62-P SRL24 62-A	SRL24T K2-P SRL24 K2-A	SRL24T 510-P SRL24 510-A	SRL24T 34-P SRL24 34-A	SRL24T XJ-P SRL24 XJ-A	SRL24T XK-P SRL24 XK-A
HERITAGE BLUE	IRONSTONE	LINEN	MARINE BLUE	MIDNIGHT SURF	NATURAL CEDAR	PEBBLE CLAY	REDWOOD	SABLE
SRL24 XL-A	SRL24 228-A	SRL24T Y6-P SRL24 Y6-A	SRL24T 865-P SRL24 865-A	SRL24T T8-P SRL24 T8-A	SRL24 XM-A	SRL24T 52-P SRL24 52-A	SRL24T 290-P SRL24 290-A	SRL24T BU-P SRL24 BU-A
SAND	SHAMROCK	SOFT MAPLE	STERLING	STORM	TOASTED ALMOND	TREE MOSS	VINTAGE CREAM	WALNUT
SRL24T 22-P SRL24 22-A	SRL24T IG-P SRL24 IG-A	SRL24T N5-P SRL24 N5-A	SRL24T XK-P SRL24 XK-A	SRL24T RA-P SRL24 RA-A	SRL24T IF-P SRL24 IF-A	SRL24T 170-P SRL24 170-A	SRL24T A9-P SRL24 A9-A	SRL24T 100-P SRL24 100-A
WEATHERED GREY	WEDGEWOOD	WHITE	WICKER					
SRL24 225-A	SRL24T D9-P SRL24 D9-A	SRL24T 04-P SRL24 04-A	SRL24T A7-P SRL24 A7-A					

MASTIC®

ALMOND	AUTUMN HARVEST	BRANDY WOOD	BRICK RED	BRONZE	CAMEO	CHARCOAL GRAY	CLASSIC CREAM	CORN SILK
SPG24T A7-P SPG24 A7-A	SPG24T 251-P SPG24 251-A	SPG24T 147-P SPG24 147-A	SPG24T 149-P SPG24 149-A	SPG24 09-A	SPG24T 31-P SPG24 31-A	SPG24 80-A	SPG24T 30-P SPG24 30-A	SPG24T 210-P SPG24 210-A
DEEP GRANITE	DESERT SAND	ENGLISH WEDGEWOOD	EVEREST	EVERGREEN	HARBOR GRAY	LAKESHORE FERN	LINEN	MAHOGANY
SPG24T 090-P SPG24 090-A	SPG24T 22-P SPG24 22-A	SPG24T 390-P SPG24 390-A	SPG24T 17-P SPG24 17-A	SGI24T 70-P SGI24 70-A	SPG24T 35-P SPG24 35-A	SPG24T IC-P SPG24 IC-A	SPG24T 44-P SPG24 44-A	SPG24T 148 -P SPG24 148 -A
MISTY SHADOW	MONTANA SUADE	MUSKET BROWN	NATURAL SLATE	NEWPORT BAY	PEBBLESTONE CLAY	PORTSMOUTH BLUE	QUIET WILLOW	RUGGED CANYON
SPG24T 144-P SPG24 144-A	SPG24T IF-P SPG24 IF-A	SGI24T 59-P SGI24 59-A	SPG24T 156-P SPG24 156-A	SPG24T 146-P SPG24 146-A	SPG24T 52-P SPG24 52-A	SPG24T IB-P SPG24 IB-A	SPG24T 170-P SPG24 170-A	SPG24T 100-P SPG24 100-A
RUSSET RED	SANDTONE	SCOTTISH THISTLE	SILVER GREY	TERRA BRONZE	TERRACOTTA	TUSCAN OLIVE	VICTORIAN GREY	VINEYARD GROVE
SPG24T 290-P SPG24 290-A	SPG24T 39-P SPG24 39-A	SPG24T 510-P SPG24 510-A	SPG24T 02-P SPG24 02-A	SGI24T 34-P SGI24 34-A	SGI24T ID-P SGI24 ID-A	SPG24T 511-P SPG24 511-A	SPG24T 36-P SPG24 36-A	SPG24T 252-P SPG24 252-A
WHITE	WICKER	WOODLAND GREEN*						
SPG24T 04-P SPG24 04-A	SPG24T A7-P SPG24 A7-A	SPG24 E4-A						

GEORGIA-PACIFIC® VINYL SIDING AND ACCESSORIES

ALMOND	AMBER	BAYOU	BEIGE	BLUE	BRIARWOOD	BROWNSTONE	BRUNSWICK	CINNABAR
SPG24T 53-P SPG24 53-A	SPG24T 254-P SPG24 254-A	SPG24T 145-P SPG24 145-A	SPG24T YP-P SPG24 YP-A	SPG24T YJ-P SPG24 YJ-A	SPG24T 100-P SPG24 100-A	SPG24T 803-P SPG24 803-A	SPG24T 812-P SPG24 812-A	SPG24T 802-P SPG24 802-A
CLAY	CREAM	DUBLIN	FLINT	GRAY	HAMPTON RED	HAZELNUT	IRON	MIST
SPG24T A5-P SPG24 A5-A	SPG24T 30-P SPG24 30-A	SPG24T 813-P SPG24 813-A	SPG24T YH-P SPG24 YH-A	SPG24T 02-P SPG24 02-A	SPG24T 290-P SPG24 290-A	SPG24T 260-P SPG24 260-A	SPG24T 814-P SPG24 814-A	SPG24T C3-P SPG24 C3-A
MUSKET BROWN	OLIVE	PALM	PEARL	PEWTER	SAGEBROOK	SHADOW	TAN	TEAK
SGI24T 59-P SGI24 59-A	SPG24T 511-P SPG24 511-A	SPG24T IC-P SPG24 IC-A	SPG24T 31-P SPG24 31-A	SPG24T 090-P SPG24 090-A	SPG24T 170-P SPG24 170-A	SPG24T 144-P SPG24 144-A	SPG24T A7-P SPG24 A7-A	SPG24T IF-P SPG24 IF-A
THISTLE	WEDGEWOOD	WHITE	COASTAL BLUE*	HEARTHSTONE BROWN*	NORTHERN OAK*	REDWOOD*	SHADED CEDAR (BRIARWOOD)*	SHADED GRAY (FLINT)*
SPG24T 510-P SPG24 510-A	SPG24T 390-P SPG24 390-A	SPG24T 04-P SPG24 04-A	SGI24 YS-A	SGI24T 275-P SGI24 275-A	SPG24T A5-P SPG24 A5-A	SPG24 E9-A	SPG24T 100-P SPG24 100-A	SPG24T YH-P SPG24 YH-A

Note: Georgia-Pacific is a trademark owned by or licensed to Georgia-Pacific LLC and is used under license. Georgia-Pacific LLC does not manufacture, distribute or warrant the products described in this brochure.

KP® / ABTCO®

ALMOND	BARN RED	CAMEL	CANVAS	CLASSIC LINEN	CLAY	DUSK	FOREST	GRAPHITE
SKP24T LH-P SKP24 LH-A	SKP24T DN-P SKP24 DN-A	SKP24T 210-P SKP24 210-A	SKP24T CW-P SKP24 CW-A	SKP24T L1-P SKP24 L1-A	SKP24T A5-P SKP24 A5-A	SKP24 E4-A	SKP24T IG-P SKP24 IG-A	SKP24T 090-P SKP24 090-A
HERITAGE GRAY	HERON	KHAKI	MAHOGANY	OCEAN	PRAIRIE WHEAT*	PUTTY	SAGE	SANDSTONE
SKP24T LT-P SKP24 LT-A	SKP24T 17-P SKP24 17-A	SKP24T LM-P SKP24 LM-A	SKP24T 148-P SKP24 148-A	SKP24T T8-P SKP24 T8-A	SKP24T A9-P SKP24 A9-A	SKP24T 53-P SKP24 53-A	SKP24T K2-P SKP24 K2-A	SKP24T LU-P SKP24 LU-A
SLATE	SMOKE	SPICE	SUEDE	TAN	WHITE			
SKP24T YH-P SKP24 YH-A	SKP24 160-A	SKP24T ID-P SKP24 ID-A	SKP24T 100-P SKP24 100-A	SGI24T 39-P SGI24 39-A	SKP24T 04-P SKP24 04-A			

JAMES HARDIE® [COORDINATING COLORS]

AGED PEWTER	ALPINE FROST	ARCTIC WHITE	AUTUMN TAN	BOOTHBAY BLUE	CHESTNUT BROWN	COBBLE STONE	COUNTRY LANE RED	DEEP OCEAN
SJH24 643-A	SJH24T 44-P SJH24 44-A	SJH24T 04-P SJH24 04-A	SJH24T 620-P SJH24 620-A	SJH24T 390-P SJH24 390-A	SJH24 621-A	SJH24T C3-P SJH24 C3-A	SJH24 622-A	SJH24 627-A
EVENING BLUE	GRAY SLATE	HEATHERED MOSS	IRON GRAY	KHAKI BROWN	LIGHT MIST	MONTERAY TAUPE	MOUNTAIN SAGE	NAVAJO BEIGE
SJH24T 623-P SJH24 623-A	SJH24 628-A	SJH24T 573-P SJH24 573-A	SJH24 624-A	SJH24T 625-P SJH24 625-A	SJH24T 02-P SJH24 02-A	SJH24T A5-P SJH24 A5-A	SJH24T IC-P SJH24 IC-A	SJH24T 53-P SJH24 53-A
NIGHT GREY	PEARL GREY	RICH ESPRESSO	SAIL CLOTH	SANDSTONE BEIGE	TIMBER BARK	TRADITIONAL RED	WOODLAND CREAM	WOODSTOCK BROWN
SJH24 629-A	SJH24T 36-P SJH24 36-A	SJH24 644-A	SJH24T A8-P SJH24 A8-A	SJH24T 276-P SJH24 276-A	SJH24T 626-P SJH24 626-A	SJH24T T2-P SJH24 T2-A	SJH24T A9-P SJH24 A9-A	SJH24T 581-P SJH24 581-A

Note: James Hardie Colors are our best available match. Please use the fandeck to verify customer acceptance.

VYTEC®

ANTIQUE IVORY	AUTUMN ASH	CANYON RIDGE	CASTLE STONE	ESTATE GRAY	FOREST	HARBOUR	IRISH LINEN	LAKESHORE BLUE
SVY24T 30-P SVY24 30-A	SVY24T S5-P SVY24 S5-A	SVY24T 100-P SVY24 100-A	SVY24T CJ-P SVY24 CJ-A	SVY24T NW-P SVY24 NW-A	SVY24 575-A	SVY24T DF-P SVY24 DF-A	SVY24T NE-P SVY24 NE-A	SVY24T IB-P SVY24 IB-A
MAPLEWOOD	REDWOOD	RUSTIC CLAY	SHORELINE	SIERRA BROWN	SMOKESTONE	SPRING MEADOW	TUNDRA MOSS	TWILIGHT GRAY
SVY24T N5-P SVY24 N5-A	SVY24T DN-P SVY24 DN-A	SVY24T CT-P SVY24 CT-A	SVY24T IF-P SVY24 IF-A	SGI24T 59-P SGI24 59-A	SVY24T DK-P SVY24 DK-A	SVY24 577-A	SVY24 577-A	SVY24T NW-P SVY24 NW-A
WHITE								
SVY24T 04-P SVY24 04-A								

A = Acrylic Smooth Finish

P = PVC Striated Finish

D = DuraPro® Satin Finish

* Solid Color Match to Variegated Item