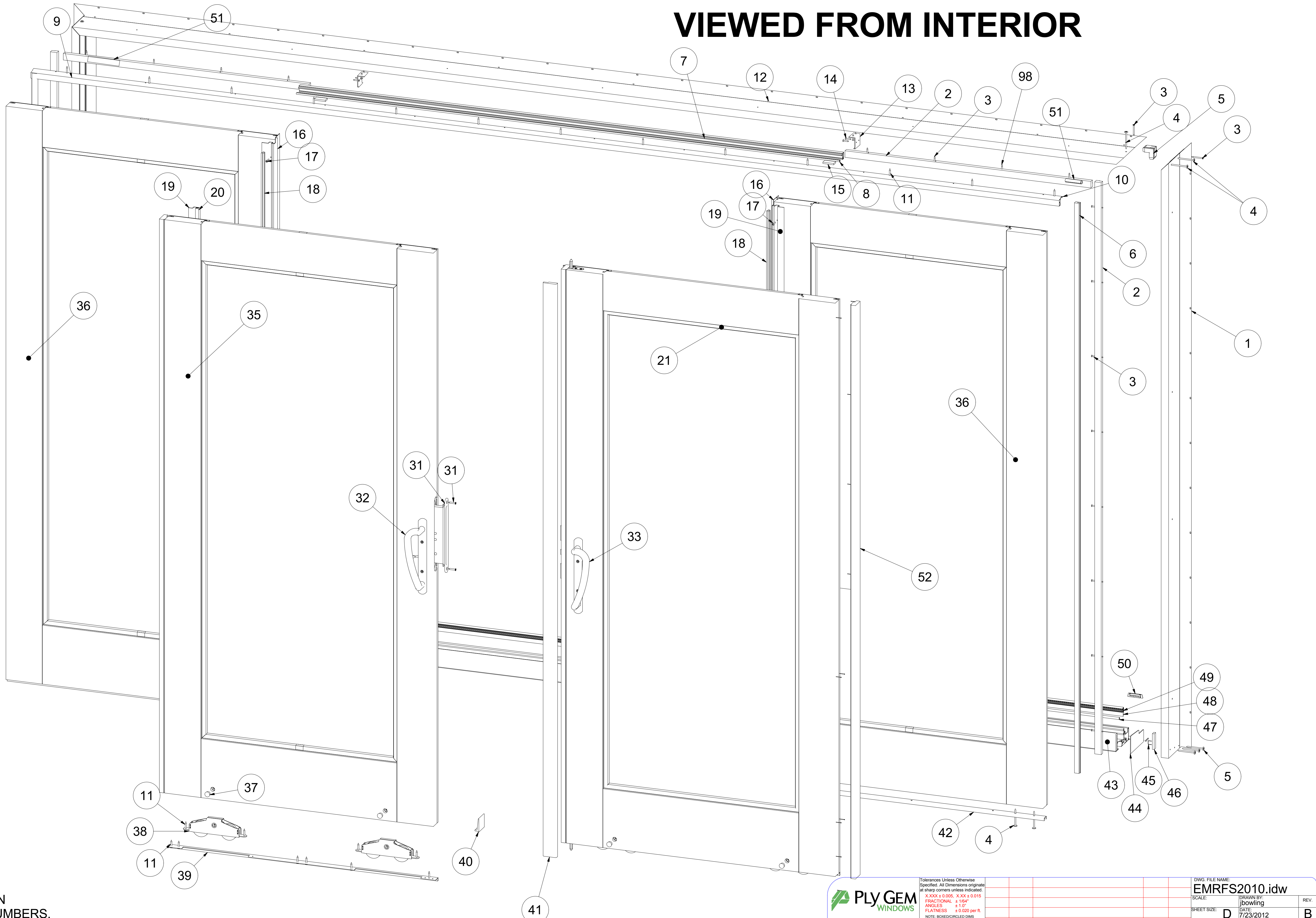


VIEWED FROM INTERIOR

1	Side Jamb	N/A
2	Stat. Panel Stop	310011 *
3	#8 x 2 Truss Head	254058
4	# 8 x 2 TH Screw	254058
5	Corner Key	253914
6	Inside Stop	253964 *
7	Parting Bead	200060*
8	Parting Bead W-Strip	600030*
9	Head Stop	310011*
10	Stop Reinforcement	230031
11	# 8 x 1 SS FH Screw	252302 *
12	1/4 x 1/2 Staple	254054
13	Inactive Panel Bracket	253958 *
14	#6 x 3/4 SS FH Screw	251679
15	Foam Pad	47415
16	Inactive Interlock	230025 *
17	# 6 x 3/4 PD DP Screw	253762
18	Pile W-Strip	51010
19	Active Interlock	230024 *
20	Active Interlock W-Strip	600017 *
21	Glazing Bead	310018 *
22	Shootbolt Guide	420093 *
23	# 7 x 3/4 SS FH Screw	52196
24	Exterior Astragal Cover	230050*
25	Astragal Filler	220132
26	Astragal W-Strip	253936
27	Upper Shootbolt / Rod	420091 *
28	Lower Shootbolt / Rod	420091 *
29	Shootbolt Gear	420090 *
31	Lock and Keeper Kit	253994
32	Active Handle Set	253984 *
33	Dummy Handle Set	420105 *
34	Passive Panel	N/A
35	Active Panel	N/A
36	Stationary Panel	N/A
37	Cap Plugs Beige	32040
37	Cap Plugs White	430015 *
38	Rollers	420089 *
39	Insert Flange	230019 *
40	Simple Solution Pad	253968
41	Astragal Trim	320012 *
42	Panel Locator	230020 *
43	Sill Assembly	N/A
44	Sill Gasket	600026 *
45	1/2 x 1/2 Staple	186475
46	Jamb Shim	310010 *
47	Track Cover	420098 *
48	W-Strip Holder	200059 *
49	W-Strip	600019 *
50	Weephole Cover	252925 *
		253733 (440054001 for prefinished)
98	#6 x 1-1/2" screw	



NOTES:
 1. PART NUMBERS NOTED WITH AN ASTERISK (*) ARE INCOMPLETE NUMBERS, AND VARY BY CALL SIZE, COLOR OR HANDING.

		Tolerances Unless Otherwise Specified. All Dimensions originate at sharp corners unless indicated. X.XXX ± 0.005; X.XX ± 0.010 FRACTIONAL ± 1/64" ANGLES ± 1.0° FLATNESS ± 0.020 per ft. NOTE: BOXED/ROULED DIMS ARE CRITICAL.		DWG. FILE NAME: EMRFS2010.idw	
				SCALE: DRAWN BY: jbowling	
				SHEET SIZE: D DATE: 7/23/2012	
B	13-168	Added panel edge trim	11-13-13	SAS	
A	12-180	initial release	8-5-12	JMB	
REV.	ECO	REVISION	DATE	BY	

DESCRIPTION:
Exploded View, Mira, Biparting Sliding Door