

4

3

2

1

B

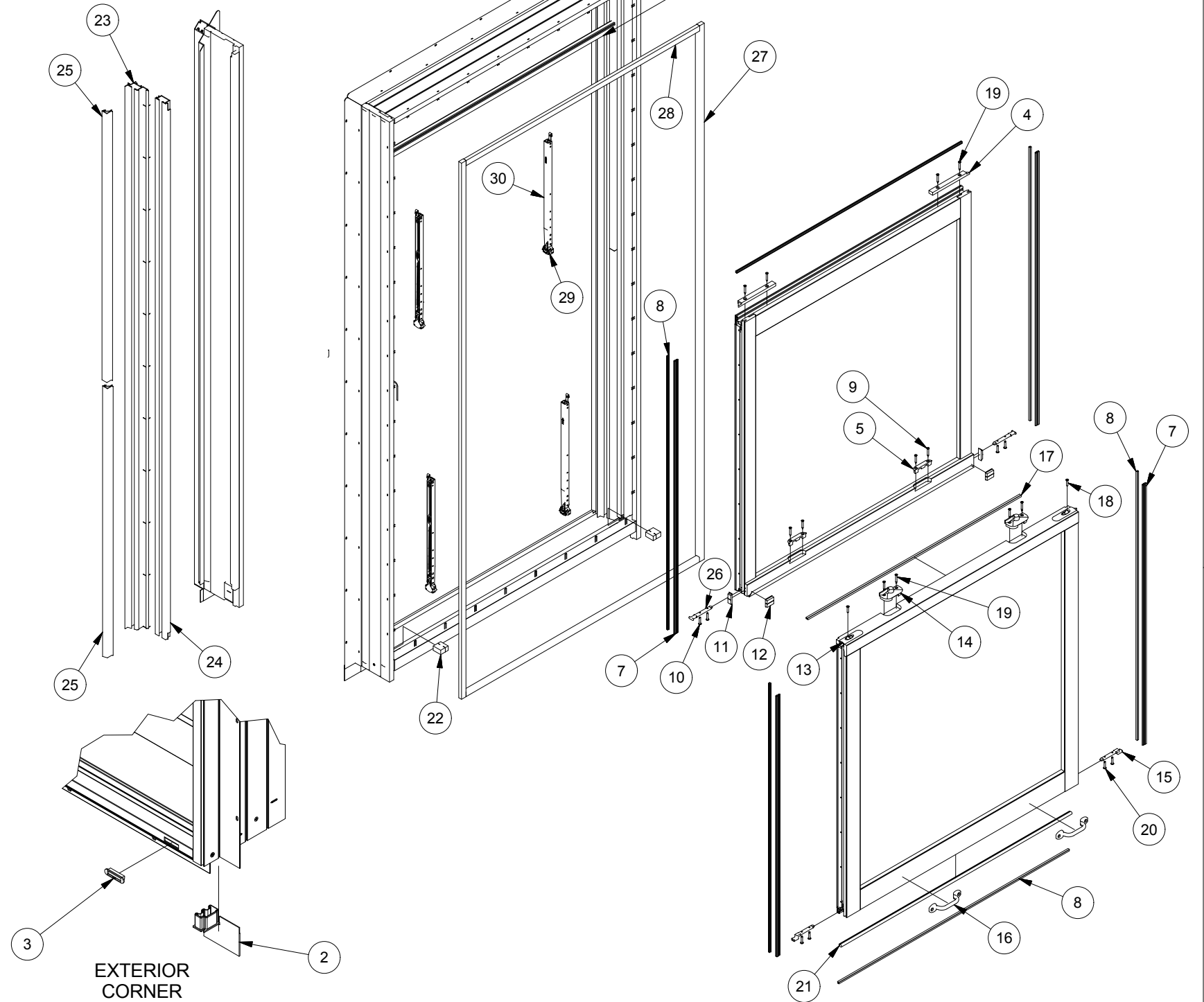
B

A

A

PARTS LIST

ITEM	PART NUMBER	DESCRIPTION	COMMENTS
1	253754	Parting Bead	*
2	253713	Sill Corner Cap	*
3	253752	Weep Cover	*
4	420035001	Tilt Latch - Top Left	420036001 - Top Right
5	253741	Keeper	*
6	253734	Pivot Bar, Bottom Sash	
7	253760	Weatherstrip, Pile, Kerf Mount	
8	253747	Weatherstrip, Pile, T-Slot	
9	253742	Keeper Screw	*
10	253762	Pivot Bar Screw	
11	253744	Pad, Check Rail End	
12	253763	Adhesive Pad	
13	253758	Tilt Latch - Bottom	* Handed
14	253739	Lock	
15	253761	Pivot Bar, Offset	
16	253757	Lift Handle with Screws	
17	253748	Weatherstrip	
18	54614	Tilt Latch Screw	
19	253740	Top Tilt Latch Screw	*
20	253762	Pivot Bar Screw	
21	253016	Bulb Weatherstrip	*
22	253751	Pad	
23	253735	Top Jamb Liner	*
24	253736	Bottom Jamb Liner	*
25	253737	Jamb Liner Cover	*
26	253734	Pivot Bar, Top Sash	
27	253732	Inside Stop, Side, 5-2	
28	253732	Inside Stop, Head/Sill, 2-8	
29	253059	Balance Shoe	
30	253186 / 400024000	Block and Tackle Balance	



NOTES:
 1. PART NUMBERS NOTED WITH AN ASTERISK (*) IN THE COMMENTS FIELD ARE INCOMPLETE NUMBERS, AND VARY BY CALL SIZE OR COLOR.

EXTERIOR CORNER



Tolerances Unless Otherwise Specified. All Dimensions originate at sharp corners unless indicated.
 X.XXX ± 0.005, X.XX ± 0.015
 FRACTIONAL ± 1/64"
 ANGLES ± 1.0°
 FLATNESS ± 0.020 per ft.
 NOTE: BOXED/CIRCLED DIMS ARE CRITICAL

The information contained herein is PROPRIETARY to and considered a TRADE SECRET of Ply Gem Window Group, a Roanoke, VA based firm, and shall not be reproduced in whole or in part without the written authorization of Ply Gem Window Group.

REV.	ECO	REVISION	DATE	BY	DESCRIPTION
D	N/A	Updated Exploded View & PL to add 27-30	8/19/16	GLT	
C	N/A	Updated Part List Description for 13	1-7-16	GLT	
B	NA	Updated part #s for top tilt latch	9-30-15	SAS	
A	N/A	initial release	8-31-12	JMB	

DWG. FILE NAME: EMRDH2001.idw		
SCALE: B	DRAWN BY: sstrachan	REV. D
DATE: 6/24/2008		
DESCRIPTION: Exploded View, Mira, Double Hung		

4

3

2

1