



DESIGNED  
TO **INSPIRE.**





For more than 75 years, professionals and homeowners alike have trusted Ply Gem as a leading building products manufacturer. All our quality products have been designed to work flawlessly together. The result is a complete exterior solution that's cost-effective to build and beautiful to behold — backed by a single company that's been serving the building industry for generations.





# Home **IMPROVED**

Whether it's "new to you" or has been called "home" for decades, it may be time to replace or remodel the exterior elements of your house. By using materials that are intended to work together from Ply Gem, you can craft the style and curb appeal you've been imagining for years.

Still unsure if it's truly possible to transform an outdated house into one that's fresh and innovative? Check out how we helped transform a forgettable 1970s two-story into the envy of the neighborhood — in less than a month.

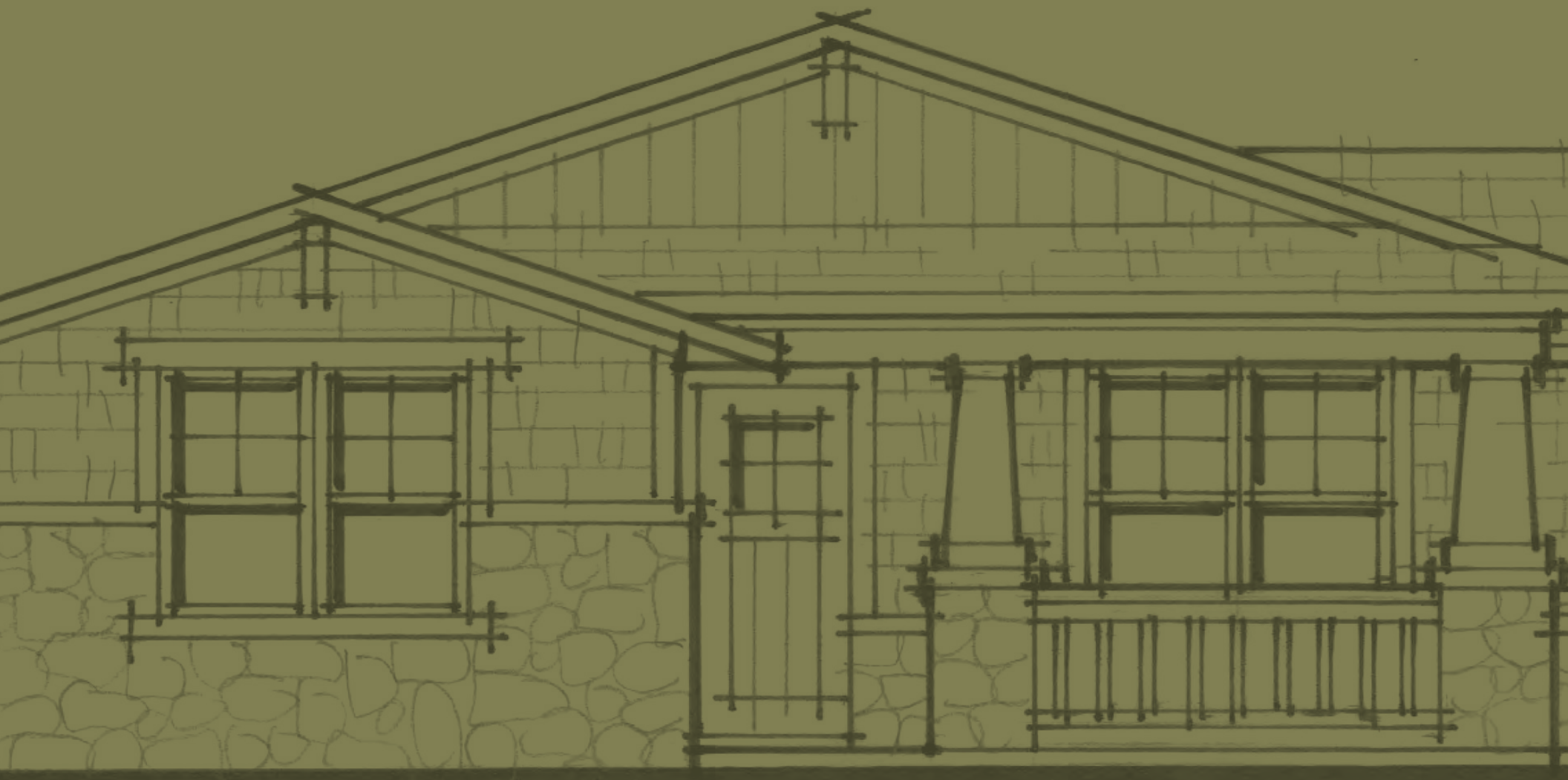






# The Dramatic Finish







# SINGLE-STORY — HOMES —

Single-story houses, or more commonly referred to as ranch-style houses, are widely preferred by homeowners because of their ease of accessibility. Unfortunately, it's all too common that these houses lack individuality and character.

However, Ply Gem helps to inspire beautifully updated, low-maintenance home exteriors by combining windows, stone veneer, siding profiles and colors, along with other accents that are intended to give any home a fresh and dramatically customized look.



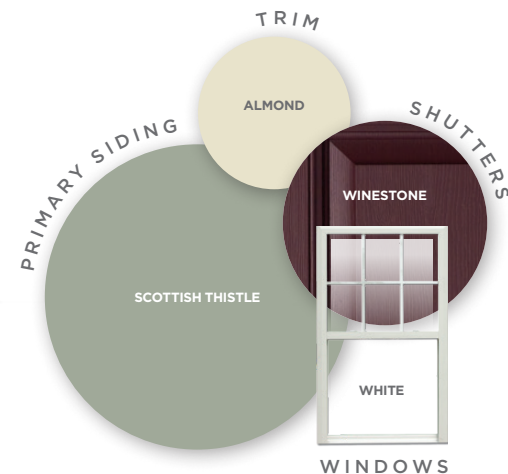


This simple, Cape Cod cottage-style home has good proportions but is short on detail — the windows lack grids, its shutters are undersized and its porch columns are too thin.

Adding color — inspired by the architecture itself — makes a dramatic impact. Right-sized shutters, the updated six-over-one window pattern and new, more substantial porch columns deliver an exceptional look.

## The FERN

COLLECTION





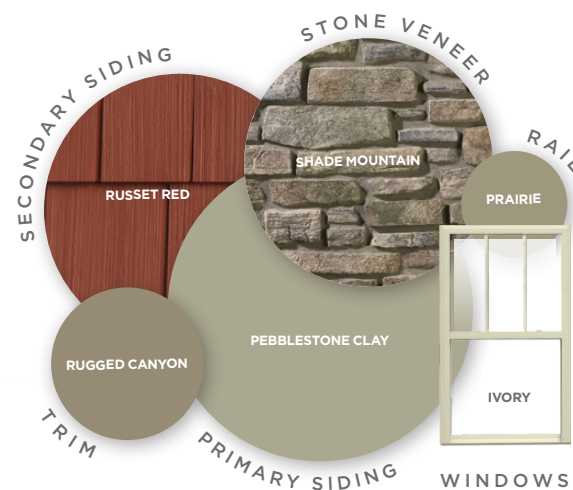


ENHANCE

A mix of colors and textures completely transform this once forgettable-looking home into an enviable Craftsman. Single windows with shutters were replaced by double windows with an authentic three-over-one grille pattern. The addition of stone columns, along with a railing application, creates a stylish front porch.

## The HILLTOP

COLLECTION



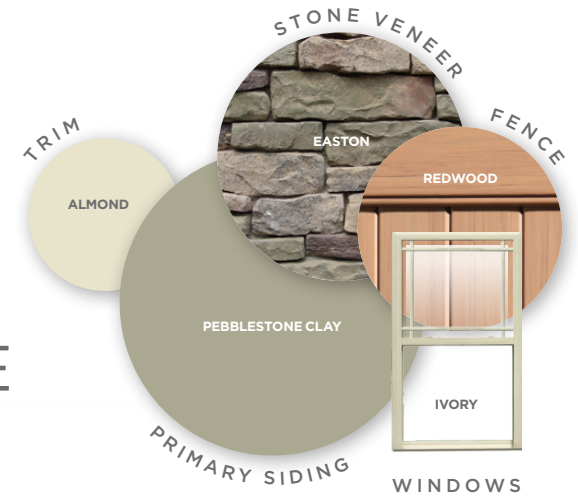


**This typical Midwestern house lacks fine points and could be considered a watered-down Prairie style. Its windows are ordinary, colors are dull and the entryway is especially weak.**



This home's existing style received a boost by updating the color and texture. Its plain windows were exchanged with a Prairie window pattern in the upper sash, the existing brick was replaced with Shadow Ledge stone and the small front porch was strengthened by adding a column.

## The RIVERSTONE COLLECTION



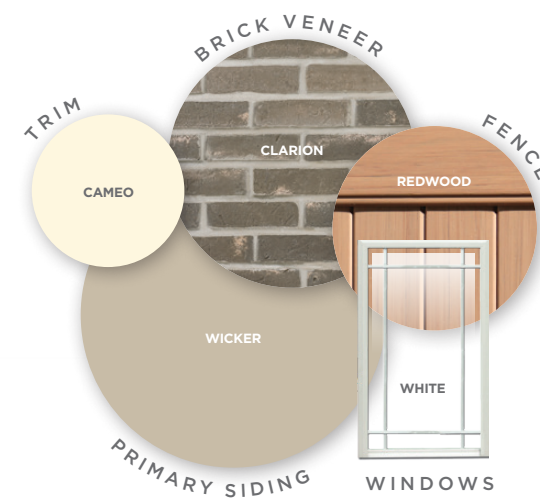




ENHANCE

The improved version of this Prairie-style home includes strong horizontal lines paired with clusters of casement windows. A front porch with massive square piers was added to give the house a bold entrance.

## The UNIVERSITY COLLECTION





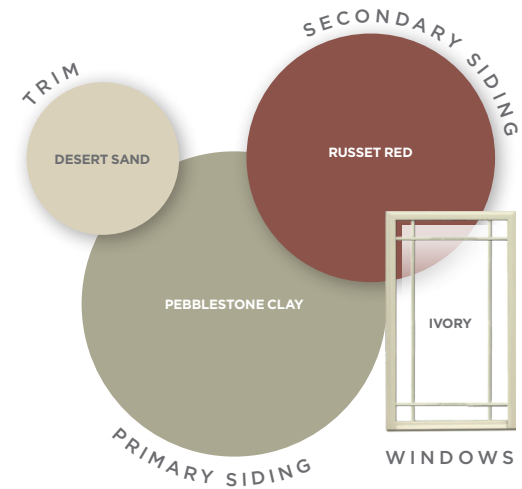
This home displays some typical architectural missteps. Shutters should be sized to function — in other words, be able to close over the entire window. Picture and corner windows were never intended to have shutters. Often times this was an attempt to add animation and color to an otherwise plain house.



In order to bring visual interest to this home, two different siding colors were chosen. The siding on the lower portion of the home is darker and wider — a technique referred to as “rusticated.” In addition, double hung windows were replaced by casements with the Prairie grille pattern.

## The SANTA FE

COLLECTION





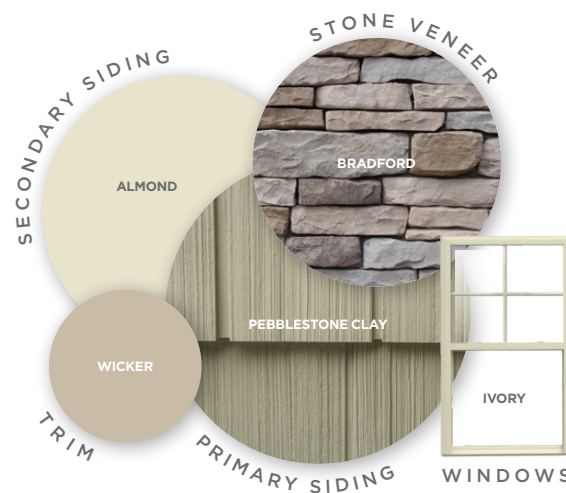


ENHANCE

This house lacked the celebration of entry. A front porch and roof gable were added, delivering the Craftsman style, which pairs well with the existing low-pitched roof and completely changes the appearance of the home. By altering window styles and placement, varying siding materials — shakes and board-and-batten and adding columned piers along with stone at the base — this home now appears architecturally authentic.

## The REED

COLLECTION





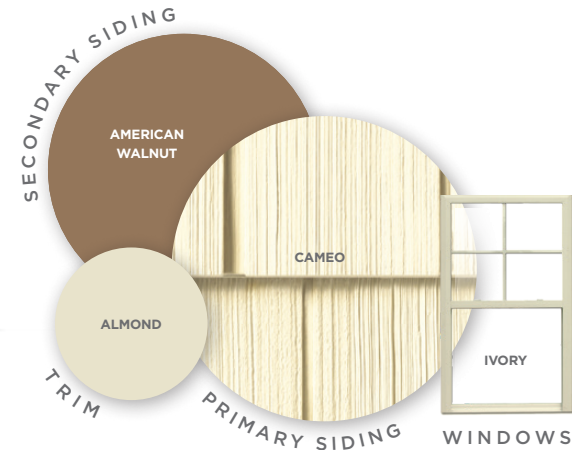
This house is a textbook example of what commonly happens when a homeowner chooses to convert a garage into living space.



By simply using a mix of siding styles and employing trim work throughout the design, this home now has a fresh, cohesive look. A new four-over-one window pattern also adds character and style to this once sparse-looking house.

## The STRAW

COLLECTION





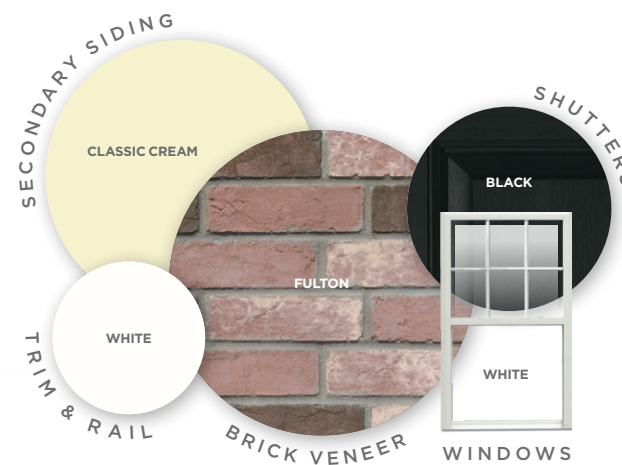


ENHANCE

Given a little more budget, a dignified Colonial Revival is possible. The addition of brick and a porch with a roof gives the home an entirely new look. A triple window with a six-over-one pattern replaces the original picture window and completes the steps necessary to make this house a classic.

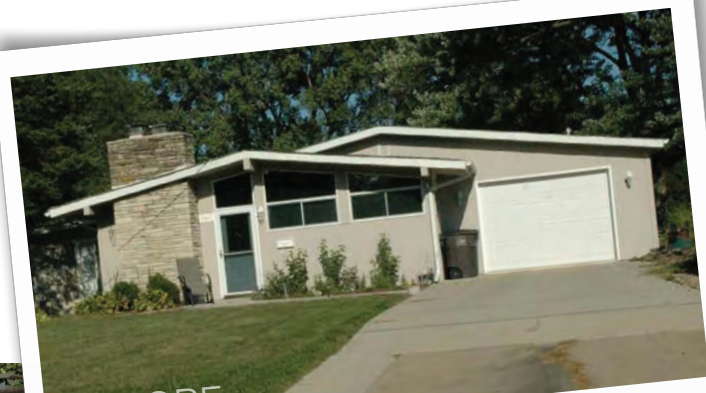
## The WASHINGTON

COLLECTION





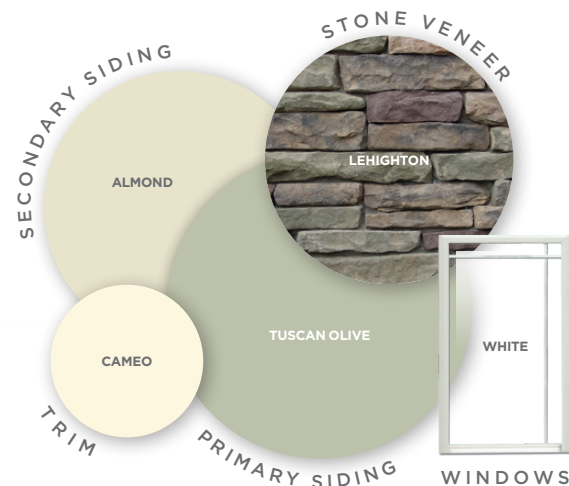
Unfortunately this mid-century Modern home has lost its contemporary appeal.



BEFORE

By celebrating its geometric shapes with window and door patterns, new chimney stone and a combination of horizontal and vertical siding, this house achieves a more modernized style.

## The FIELDGRASS COLLECTION



REFRESH



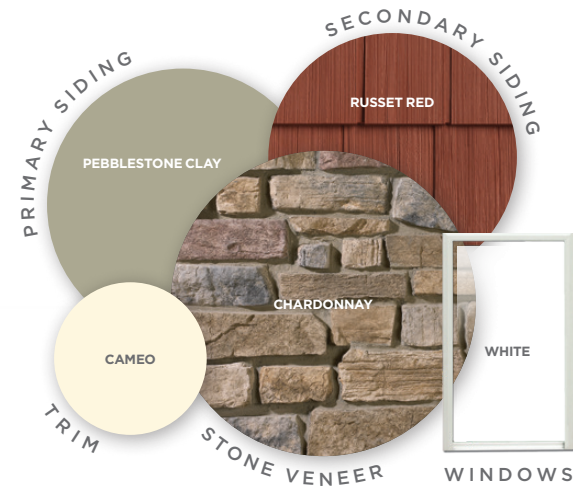


ENHANCE

By adding a guest-friendly front porch and carrying the fireplace stone across the entire base of the structure, this house transforms into the chic mid-century Modern it was intended to be.

## The LAKESIDE

COLLECTION





The intended style of this house is lost because its primary elements — arched beams, enormous roof and hidden brick — lack consistency.

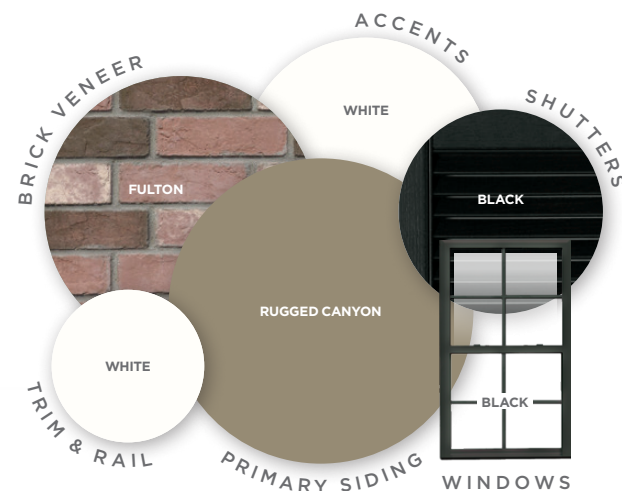


BEFORE

The combination of false roof dormers, new — more prominent — front porch columns and brick wainscoting allows this house to embrace a Colonial Revival architectural style. By eliminating the arched beams and giving it a strong, dignified line, the front porch makes a statement.

## The LINCOLNTON

COLLECTION



REFRESH





ENHANCE

This house was transformed into a traditional Craftsman style by first framing a gable and portico atop the overbearing roof, and then completed by adding stone, shakes and front porch pillars.

## The REDWOOD

COLLECTION

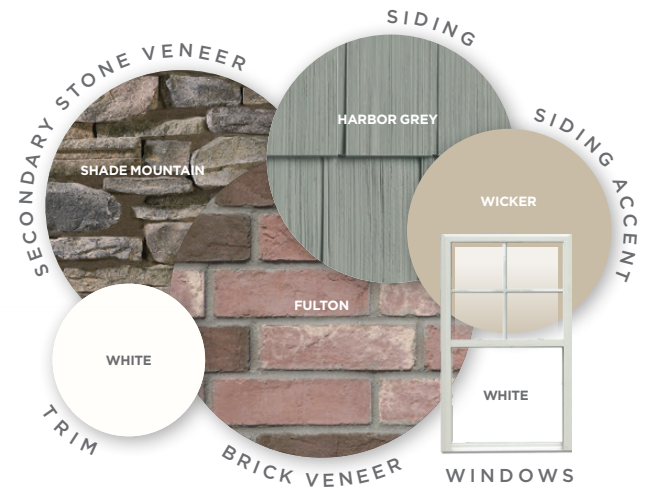




The front entry of this ordinary home is lost — overwhelmed by battling gables and an unfortunately prominent garage that is flanked by brick, which acts like goal posts.

Colorful shakes along with louvered gable vents and brace supports adorn this home with style; while the addition of a secondary stone surface gives mass to the small gable area and helps lead guests to the front door.

## The WEDGEWOOD COLLECTION





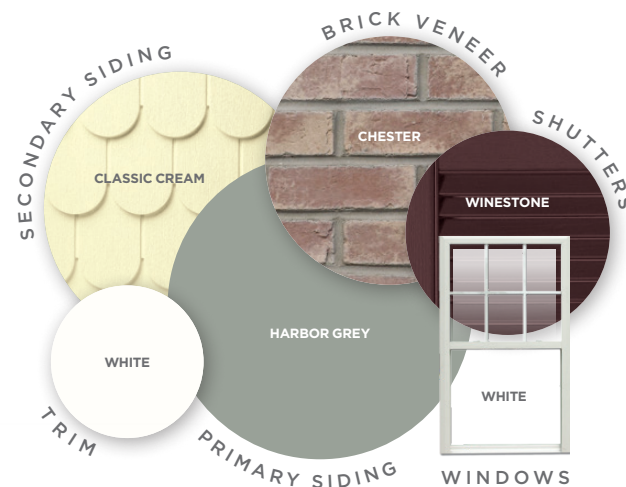


ENHANCE

This newly created Victorian ranch was fashioned by adding a front porch that emphasizes its entrance and prevents the garage from being the highest point on the house. Scallop shakes and brace supports along with playful colors and updated brick across the base lend authenticity to the refreshed style.

## The CAPE MAY

COLLECTION





This 70s style house is drab with unadorned windows and a front section that projects yet has no windows or other design elements.



Without changing the structure, but by adding classic louvered vents, two siding types and stone along its base, this house was given a chic new look.

## The FAWN COLLECTION







ENHANCE

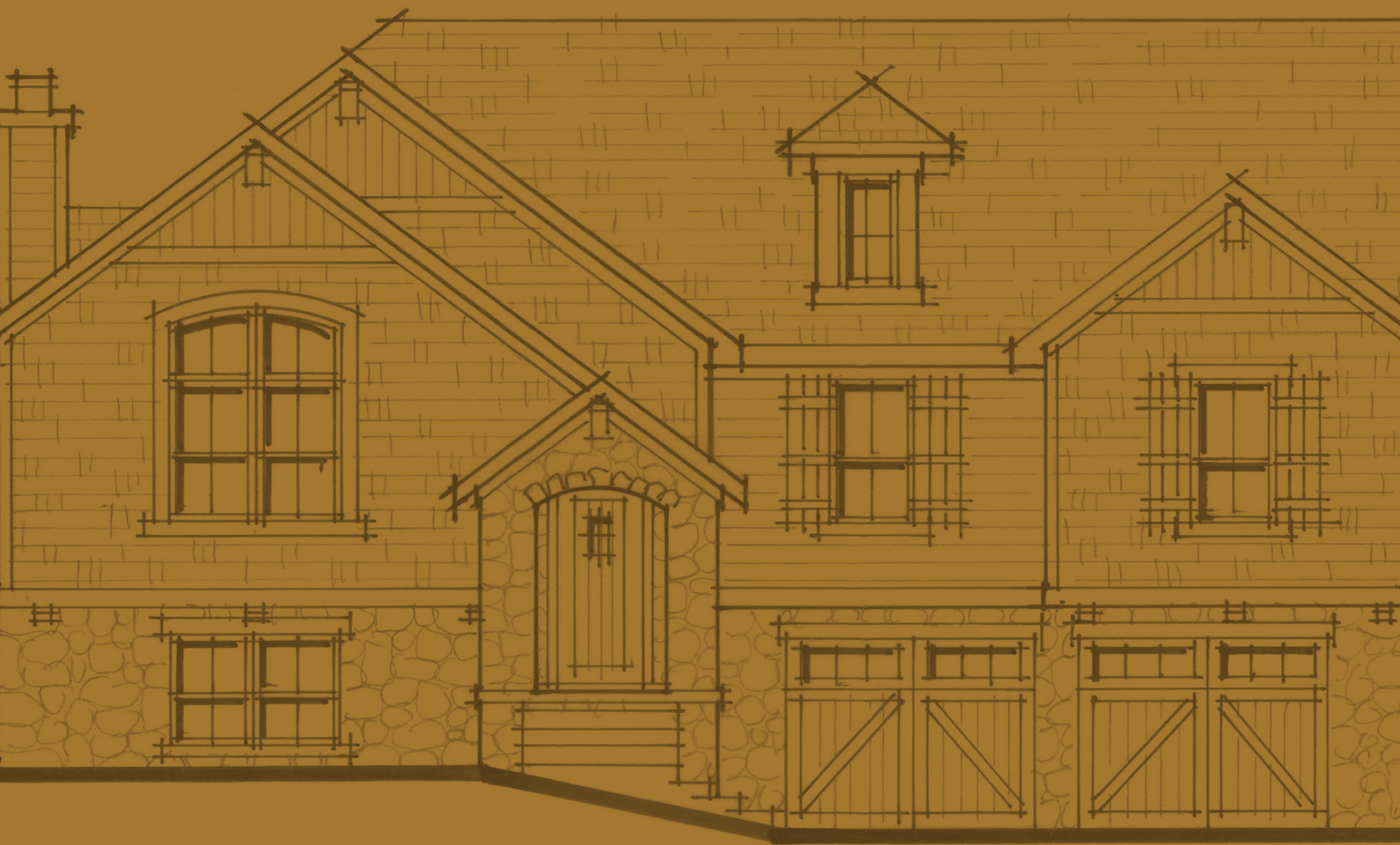
The addition of a porch and framed gable on top of the original roof provides balance and makes the windowless element irrelevant. Yet it's the red shakes and Shadow LedgeStone that completely change this house into a Craftsman.

## The VISTA

COLLECTION









# SPLIT-LEVEL — HOMES —

Split-level construction was a trend that dominated new home creation throughout the 1960–70s. Yet more often than not, it lacked any sense of traditional residential architecture. Ply Gem takes this challenge to heart and suggests that by adding a combination of materials, colors and textures, these once outdated home exteriors can become customized architectural looks.





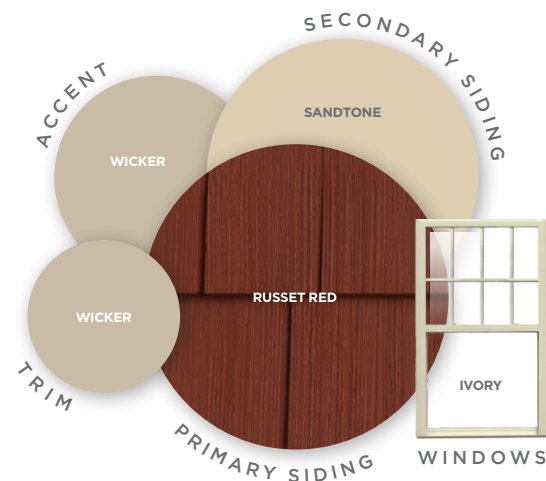
This example reveals one of the typical challenges found in split levels: it looks like two houses — a single story and a two story — pressed together. The pale, monotone color scheme is boring, and without a front porch, there's no defined point of entry.



BEFORE

Removing its ill-fitted shutters and blending a trio of siding profiles with warm colors, the look of this house is unified.

## The EMBER COLLECTION



REFRESH





ENHANCE

A gabled porch provides a grand entry point and unites the two levels together. Stone, along with six-over-one windows, right-sized shutters and other accents give this home a Shingle-style appeal.

# The BUCKSKIN

COLLECTION



Refer to the inside back cover for product specs.



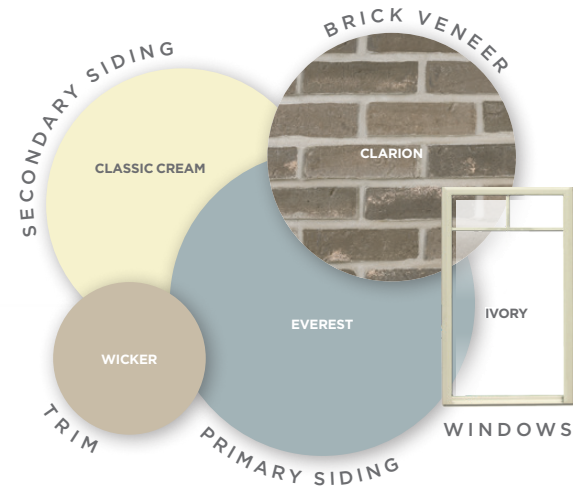
The garage door on this 70s-style house demands attention; while the combination of inconsistent detail elements prevent it from claiming a true style.



Adjusting siding profiles and adding a brick entrance column offsets the large garage door and brings balance to the look of this house. Additionally, Prairie-style window grids deliver architectural authenticity.

## The STUDIO

COLLECTION



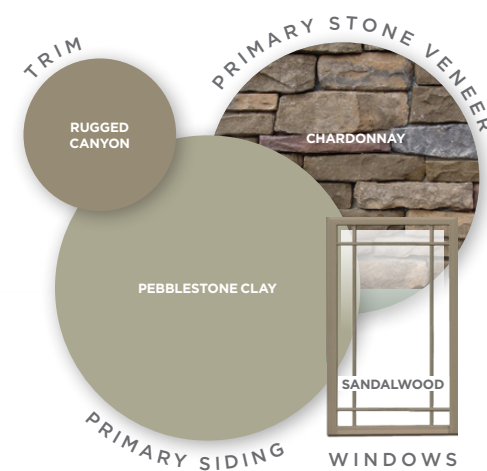




ENHANCE

A hip roof is added to extend a new stone porch in front of the garage. The updated windows with thinner casements create a vertical contrast to the horizontal lines of the house.

## The MEADOWBROOK COLLECTION



Refer to the inside back cover for product specs.



**This drab, outdated exterior is monotonous and lacks both visual appeal and a welcoming front entrance.**

The addition of columns creates a small, defined, front porch; while including stone and splashes of color bring visual interest and personality to this house.

## The SUFFOLK COLLECTION



REFRESH

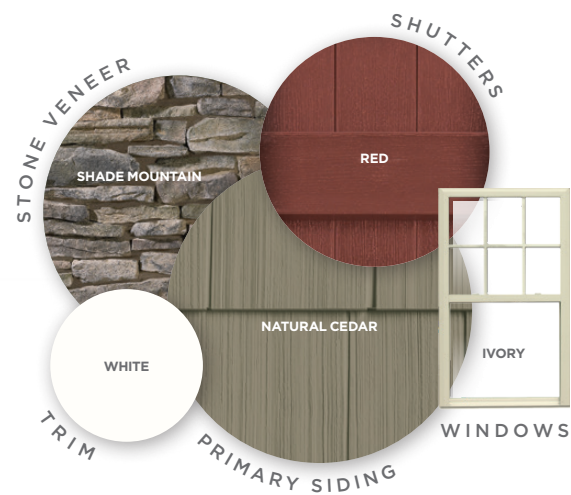




ENHANCE

A gable, along with newly proportioned windows and updates to color and texture through both stone and siding, transform this into a charming, Shingle-style house.

## The AUTUMN COLLECTION





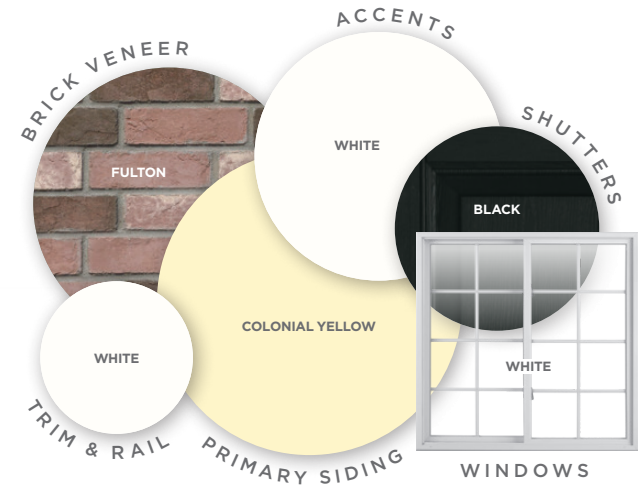
This colorless house looks outdated with its iron work columns, painted brick and window “wings.”



By adding substantial front porch columns, updating the windows with grids and incorporating brick with color, a Colonial-style exterior was created.

## The QUEEN ANNE

COLLECTION







ENHANCE

Coordinated roof and front porch gables work well together and team up beautifully with the stone and siding profiles to transform this house into a Craftsman.

## The **SUNSET** COLLECTION



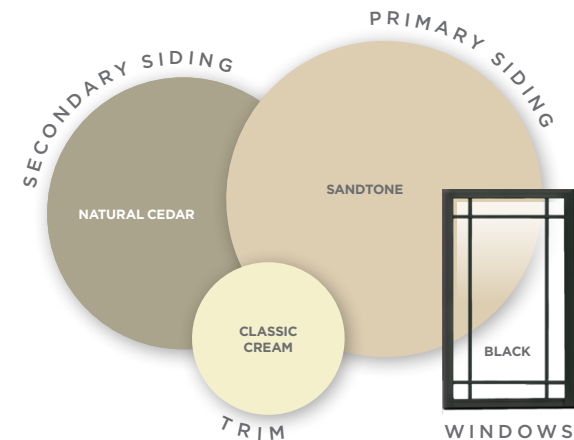


This monochromatic “challenge” with plain windows and no sense of entry, lacks balance and is overwhelmed by the garage and its gables.



Two different siding profiles give this house an architecturally interesting look, while the addition of black windows with prairie grids enhances its character.

## The ELKHORN COLLECTION



REFRESH







ENHANCE

The overall look of this home is unified through its use of complementing stone and siding colors. Adding a front porch with formidable columns makes this house appear far more welcoming.

# The PINE

COLLECTION





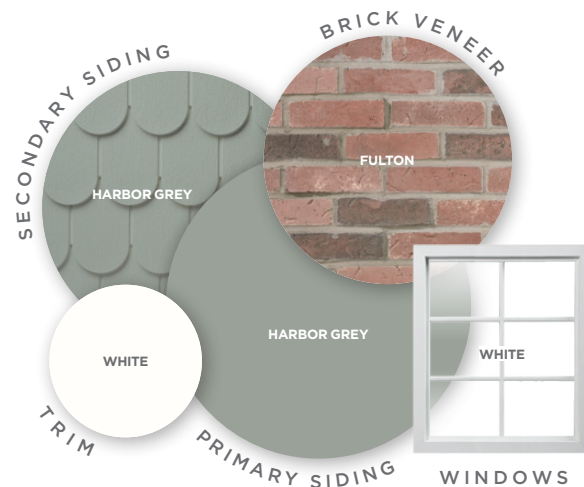
While it lacks discernible style and detail, the primary challenge with this home is the scale and balance of its components — such as the disproportionately large half-round window.



Simply adding accessory details to the gables and mixing siding styles assigns character and helps this newly created Victorian exterior to extend a warm welcome to guests.

## The SOHO

COLLECTION



REFRESH





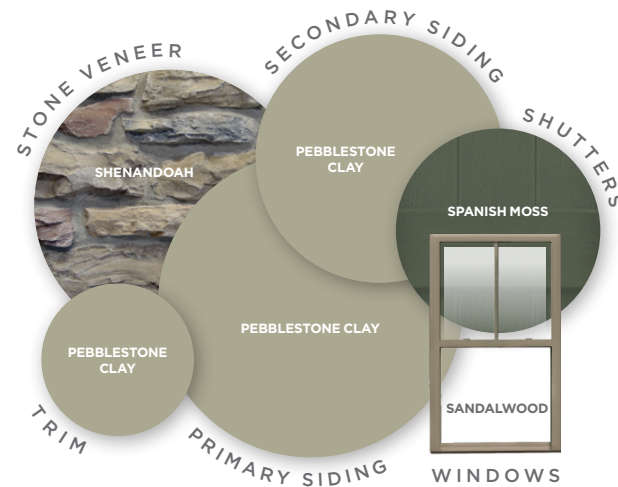


ENHANCE

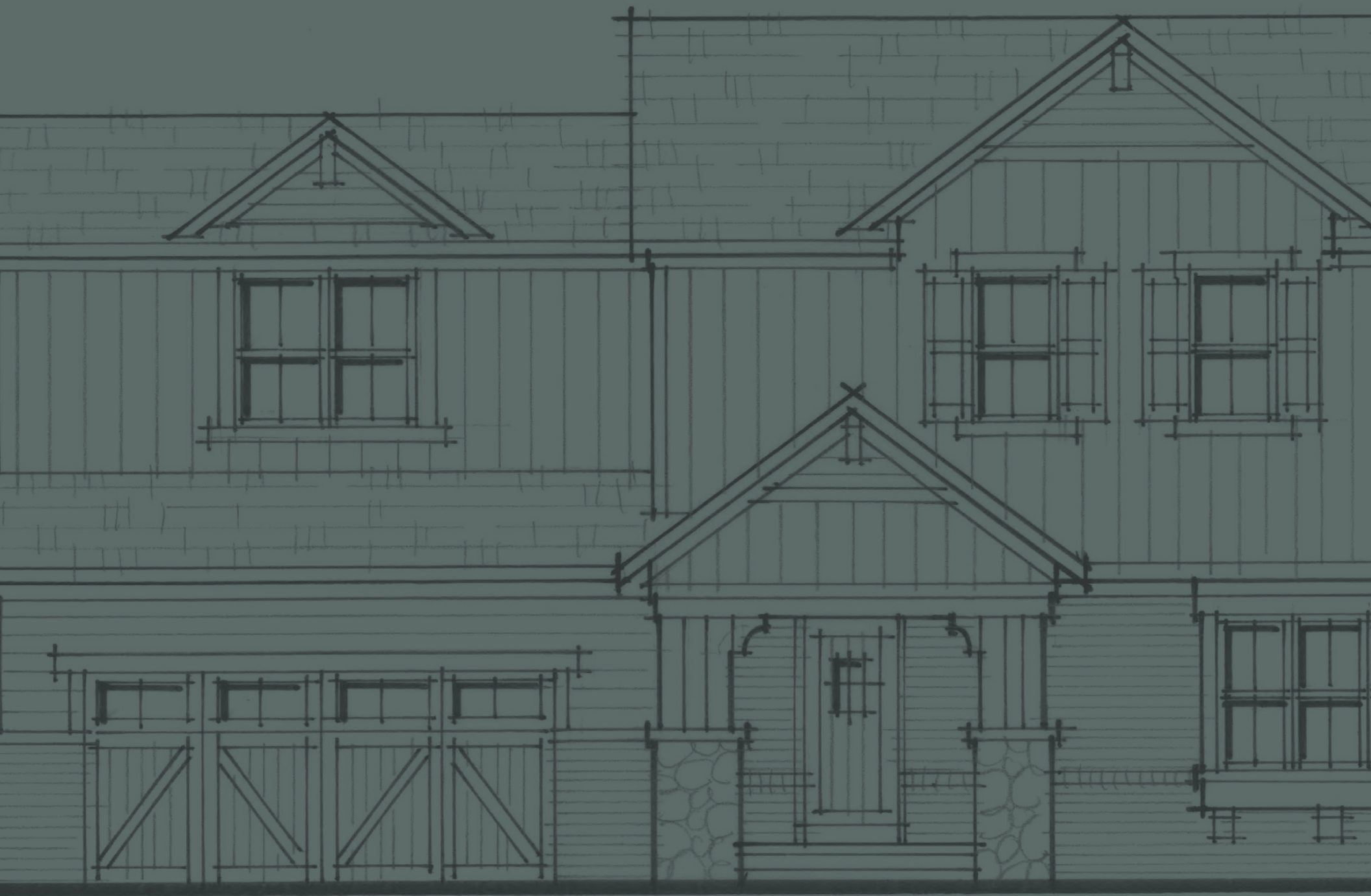
Creating this French Country look started with new windows. It is further stylized by adding a stone entryway, reducing the scale of the gables and utilizing two different siding profiles — shakes and board-and-batten.

## The LODGE

COLLECTION









# TWO-STORY — HOMES —

The interior space available in a two-story home allows families the room they need to comfortably spread out. Yet, all too often what works well inside the house presents homeowners with exterior design and curb appeal challenges.

Ply Gem makes it possible for you to explore the possibilities and create a home exterior that will be the envy of the neighborhood.





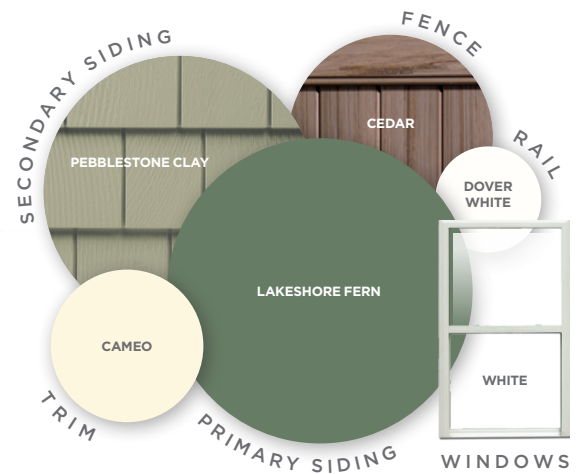
**This charming house, with its friendly front porch, is bursting with potential but lacks the style and color to make it stand out in the neighborhood.**



Minor changes to just the color and texture show the impact that a material change can have on the personality and look of a house.

## The SLATE

COLLECTION





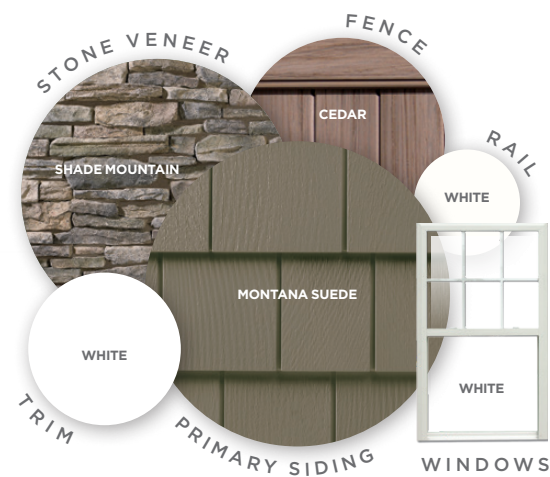


ENHANCE

The addition of a gable over the entry incorporates the porch into the main body of the house, while the stone delivers a vintage façade.

## The DEER VALLEY

COLLECTION





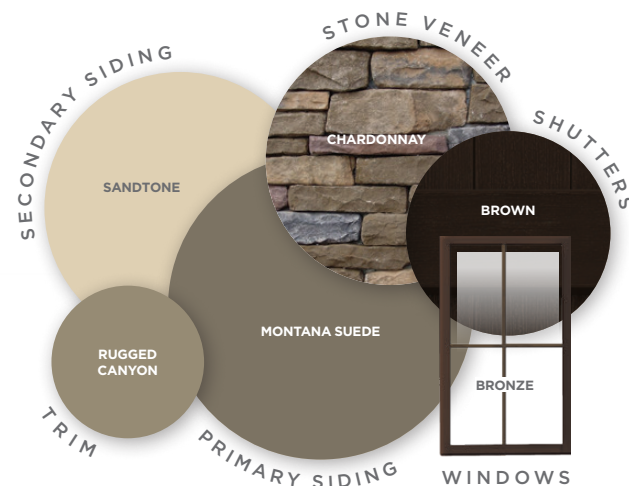
This typical 1980s house has no discernible style and is easy to miss with its dull color palette and horizontal lines. Also, since the porch roof sits below just one pair of windows, the overall appearance lacks symmetry.



Incorporating a variety of colors and textures introduced by the stone base, this completely updated exterior cleverly uses earth tones to create an original new look.

## The TELLURIDE

COLLECTION







ENHANCE

By adding two gables to the roof line and a front porch, this house is thoroughly transformed. Incorporating splendid color and tapered column bases completes the Craftsman style.

## The GRANITE

COLLECTION





Unfortunately this house misses the mark on a classic style. Its hexagon window above the entryway is out of scale, while the front door lacks welcoming charm.



Color vividly changes the personality of this home with new, white-trimmed windows. Adding a small single-hung in the center of the second floor creates a Colonial Revival look.

## The ADAMS

COLLECTION







ENHANCE

An entirely new Shingle-style home was fashioned by adding a warm stone base, shakes and a striking front porch. The second-floor windows are paired up, giving them a whole new look.

## The SANDSTONE COLLECTION



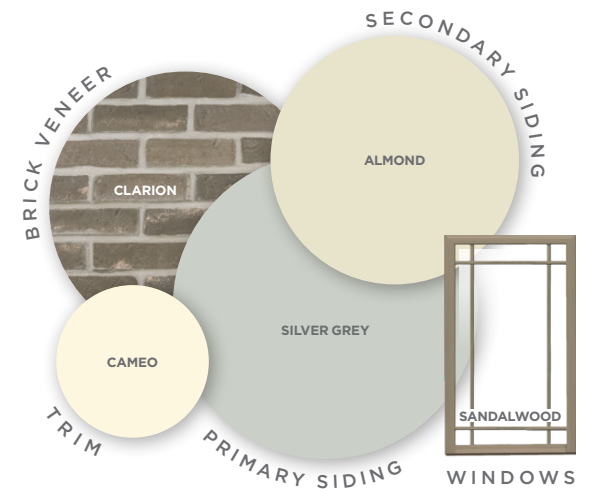


This once Modern house is severely outdated and unfortunately, its overall appearance is missing warmth and curb appeal. The lack of windows and odd proportions present a visual challenge.



To help bring balance, louvered vents were added as accents to either side of the new upper-level windows. Then, by also adding brick to the base of the house, Prairie-style architecture is introduced.

## The STAINLESS COLLECTION







The newly added gables play a role in the transformation of this house. Then through color, as well as pairing stone with board and batten siding and shutters, this beautiful exterior has become a model for others in the neighborhood.

## The PEWTER

COLLECTION





Narrow windows and an uninspired color choice prevent this house from impressing guests.



Widening the second floor windows and giving them a Craftsman grid pattern is a significant improvement. Design elements such as stone piers and brackets — to catch the floor above — contribute elegance to a once forgettable house.

## The SAN ANDREAS COLLECTION







ENHANCE

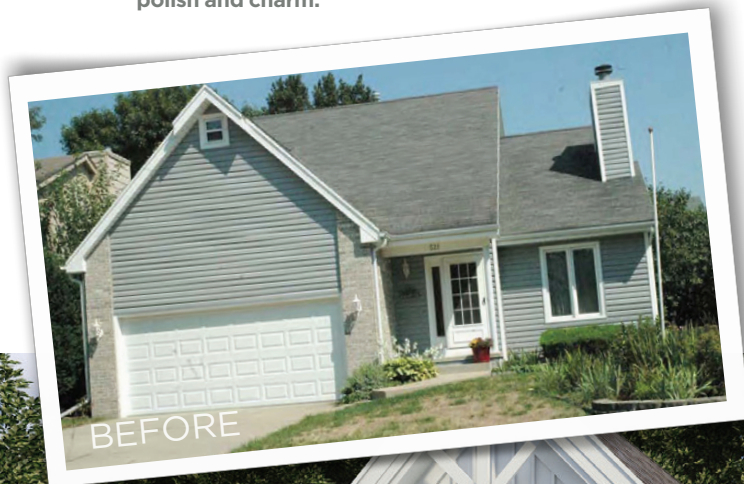
Converting the large overhang into a functional porch changes this house into a Craftsman style. The newly added dormer on the single-story side helps to give balance to the overall look.

## The DAWN COLLECTION





This house, with its enormous garage gable, lack of windows and pale color scheme, is missing design elements that will give it polish and charm.



Crafted together, the use of scalloped shingles, brackets on the columns and gable details create a charming Folk Victorian home. The height of the front gable has been camouflaged by the use of a normal-sized window and a mix of siding types.

## The GULLWING

COLLECTION



REFRESH



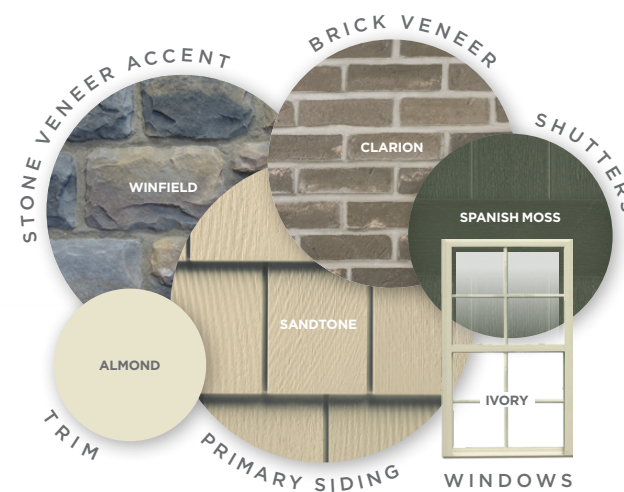




A lovely French Country home exterior was created through the use of brick, stone and shakes. To lend balance to the oversized gable, a small false dormer was added over the front door.

## The SAGE

COLLECTION





**This house, with its generous front porch, unfortunately has a bulging garage that puts the focus in the wrong place. The vanilla color palette does not contribute eye appeal.**



Newly added stone helps draw attention to the front door while the combination of coordinated textures and materials, such as gable vents, deliver a more balanced look overall.

## The MAPLE

COLLECTION







By over-framing with a second gable featuring a circle window, the location of the front door is highlighted. This enhancement fixes some of the architectural “wrongs” of the original house. Now, through the use of color and contrasting trim, a classic Shingle-style is possible.

## The LOREDO

COLLECTION





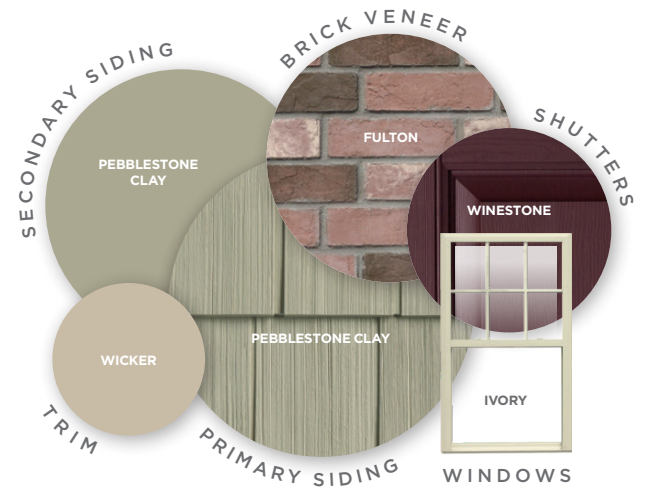
**This 1970s-style house is missing personality and architectural character. The front entry is unprotected and lacks a warm welcome.**



New windows, siding and stone veneer have transformed the uninspiring façade in the before photo into a handsome, charming exterior. Architectural features such as the shuttered, divided-lite windows create a stately appearance, while stone veneer and lap siding complete the traditional look of a Colonial.

## The CABIN

COLLECTION





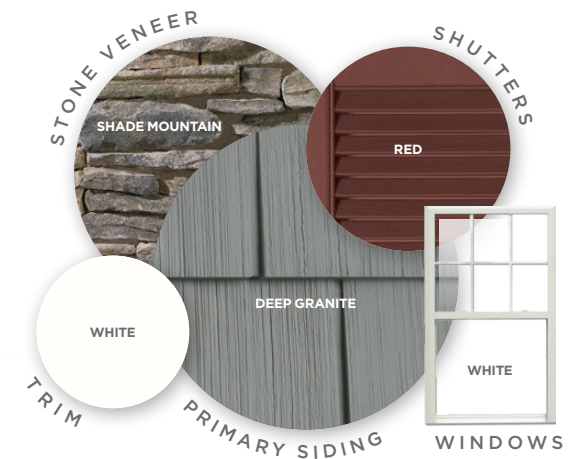


ENHANCE

Simple structural enhancements can have a dramatic effect. A front porch extends a welcome entry, while a second-story gable breaks up the roofline on this boxy 70s Colonial. Siding materials, windows, shutters and colors work together to create an eye-catching result.

## The BRONZE

COLLECTION





You've decided the time is right to update the look of your house. We understand that this is just the first of many choices you'll need to make over the next few weeks. Therefore, as the complete exterior solution, we're here to help simplify the process.

**Most homeowners prefer a step-by-step approach and while no two projects are the same, consider the following plan:**



## 1 Decide the **scope**.

- How long do you plan to stay in your home? Short or long term?
- What are your remodeling goals? Increase efficiency? Reduce maintenance? Update the appearance?
- Establish a budget.
- Meet with contractors and select the one you feel most comfortable with.



## 2 Make your **selections**.

- What do you like or dislike about your house right now?
- Do you have design ideas? Colors you prefer? Styles you love?
- Visit [mastic.com](http://mastic.com) and choose our interactive design tool. Choose a home like yours and experiment with colors and textures. Create your own wish list and share it with your contractor.
- Consider working with a Mastic Elite or Preferred Contractor to transform a photo of your home on screen to see what your project can look like.



## 3 **Enjoy!**

- Adore the new look and increased curb appeal.
- Experience more time enjoying your home and less time fixing and maintaining it.
- Benefit from increased energy efficiency.



# SINGLE STORY HOMES PRODUCT SPECS

HOME NO.	REFRESH	ENHANCED
<b>HOME 1</b>	<b>the FERN</b> COLLECTION PAGE 8	<b>the HILLTOP</b> COLLECTION PAGE 9
PRIMARY SIDING	Quest® D5 - Scottish Thistle	Quest® D5 - Pebblestone Clay
SECONDARY SIDING	-	Cedar Discovery® Perfection D7 - Russet Red
ACCENTS	Trim - Almond / Raised Panel Shutters - Winestone	Trim Sheet - Rugged Canyon
REPLACEMENT WINDOWS	5000 Series - Double Hung Windows - White	5000 Series - Double Hung Windows - Ivory
STONE	-	Ply Gem Stone Ridgestone - Shade Mountain
FENCE+RAIL	-	Ply Gem Standard Rail - Prairie
GUTTER	Gutter - Almond	Gutter - Rugged Canyon
<b>HOME 2</b>	<b>the RIVERSTONE</b> COLLECTION PAGE 10	<b>the UNIVERSITY</b> COLLECTION PAGE 11
PRIMARY SIDING	Quest® D4 - Pebblestone Clay	Quest® D4 - Wicker
SECONDARY SIDING	-	-
ACCENTS	Fascia, Soffit and Trim Sheet - Almond	Fascia, Soffit and Trim Sheet - Cameo
REPLACEMENT WINDOWS	5000 Series - Double Hung & Picture Windows - Ivory	5000 Series - Casement Windows - White
STONE	Ply Gem Stone Shadow LedgeStone - Easton	Ply Gem Stone Brick - Clarion Colonial
FENCE+RAIL	Ply Gem Solid Privacy Fence - Redwood	Ply Gem Solid Privacy Fence - Redwood
GUTTER	Gutter - Almond	Gutter - Cameo
<b>HOME 3</b>	<b>the SANTA FE</b> COLLECTION PAGE 12	<b>the REED</b> COLLECTION PAGE 13
PRIMARY SIDING	Ovation™ T3 - Pebblestone Clay	Cedar Discovery® Perfection D7 - Pebblestone Clay
SECONDARY SIDING	Quest® D4 - Russet Red	Board+Batten Designer Series™ - Almond
ACCENTS	Fascia, Soffit and Trim Sheet - Desert Sand	Fascia, Soffit and Trim Sheet -Wicker
REPLACEMENT WINDOWS	5000 Series - Casement & Picture Windows - Ivory	5000 Series - Double Hung Windows - Ivory
STONE	-	Ply Gem Stone Shadow LedgeStone - Bradford
FENCE+RAIL	-	-
GUTTER	Gutter - Desert Sand	Gutter - Wicker
<b>HOME 4</b>	<b>the STRAW</b> COLLECTION PAGE 14	<b>the WASHINGTON</b> COLLECTION PAGE 15
PRIMARY SIDING	Cedar Discovery® Perfection D7 - Cameo	Mastic Quest® D5 - Classic Cream
SECONDARY SIDING	Quest® D4 - American Walnut / Pro-Select® D5 Vertical Siding - American Walnut	-
ACCENTS	Fascia, Soffit and Trim Sheet - Almond	Fascia, Soffit and Trim Sheet - White / Raised Panel Shutters - Black
REPLACEMENT WINDOWS	5000 Series - Double Hung & Picture Windows - Ivory	5000 Series - Double Hung Windows - White
STONE	-	Ply Gem Stone Brick - Fulton Colonial
FENCE+RAIL	-	Ply Gem T-Rail - White
GUTTER	Gutter - Almond	Gutter - White
<b>HOME 5</b>	<b>the FIELDGRASS</b> COLLECTION PAGE 16	<b>the LAKESIDE</b> COLLECTION PAGE 17
PRIMARY SIDING	Quest® D4 - Tuscan Olive	Ovation™ T3 - Pebblestone Clay
SECONDARY SIDING	Board+Batten Designer Series™ - Almond	Cedar Discovery® Perfection D7 - Russet Red
ACCENTS	Fascia, Soffit and Trim Sheet - Cameo	Fascia, Soffit and Trim Sheet - Cameo
REPLACEMENT WINDOWS	5000 Series - Architectural Shape Windows - White	5000 Series - Architectural Shape Windows - White
STONE	Ply Gem Stone Shadow LedgeStone - Leighton	Ply Gem Stone Ridgestone - Chardonnay
FENCE+RAIL	-	-
GUTTER	Gutter - Cameo	Gutter - Cameo
<b>HOME 6</b>	<b>the LINCOLNTON</b> COLLECTION PAGE 18	<b>the REDWOOD</b> COLLECTION PAGE 19
PRIMARY SIDING	Quest® D4 - Rugged Canyon	Quest® D4 - Classic Cream
SECONDARY SIDING	-	Cedar Discovery® Hand-Split Shake - Cedar
ACCENTS	Fascia, Soffit and Trim Sheet - White / Louvered Shutters - Black	Fascia, Soffit and Trim Sheet - White
REPLACEMENT WINDOWS	5000 Series - Double Hung & Picture Windows - Black	5000 Series - Double Hung & Picture Windows - Taupe
STONE	Ply Gem Stone Brick - Fulton Colonial	Ply Gem Stone Cut Cobblestone - Winfield
FENCE+RAIL	Ply Gem Contour Rail - White	Standard Rail - White
GUTTER	Gutter - White	Gutter - White
<b>HOME 7</b>	<b>the WEDGEWOOD</b> COLLECTION PAGE 20	<b>the CAPE MAY</b> COLLECTION PAGE 21
PRIMARY SIDING	Cedar Discovery® Perfection D7 - Harbor Grey	Structure® D6 - Harbor Grey
SECONDARY SIDING	Structure® D6 - Wicker	Cedar Discovery® Half-Round - Classic Cream
ACCENTS	Fascia, Soffit and Trim Sheet - White / Rectangle Gable Vents - White	Fascia, Soffit and Trim Sheet - White / Rectangle Gable Vents - Painted Winestone / Louvered Shutters - Winestone
REPLACEMENT WINDOWS	5000 Series - Double Hung Windows - White	5000 Series - Double Hung Windows - White
STONE	Ply Gem Stone Brick - Fulton Colonial / Shadow LedgeStone - Shade Mountain	Ply Gem Stone Brick - Chester Colonial
FENCE+RAIL	-	-
GUTTER	Gutter - White	Gutter - White
<b>HOME 8</b>	<b>the FAWN</b> COLLECTION PAGE 22	<b>the VISTA</b> COLLECTION PAGE 23
PRIMARY SIDING	Quest® D4 - Wicker	Cedar Discovery® Half-Split Shake - Russet Red
SECONDARY SIDING	Cedar Discovery® Perfection D7 - Pebblestone Clay	Quest® D5 - Rugged Canyon / Board+Batten Designer Series™ - Rugged Canyon
ACCENTS	Fascia, Soffit and Trim Sheet - Wicker	Fascia, Soffit and Trim Sheet - Wicker
REPLACEMENT WINDOWS	5000 Series - Double Hung Windows - Ivory	5000 Series - Double Hung Windows - Ivory
STONE	Ply Gem Stone Ridgestone - Chardonnay	Ply Gem Stone Ridgestone - Buckingham
FENCE+RAIL	-	Ply Gem T-Rail - Khaki
GUTTER	Gutter - Wicker	Gutter - Wicker



HOME NO.	REFRESH	ENHANCED
<b>HOME 9</b>	<b>the EMBER</b> COLLECTION PAGE 26 PRIMARY SIDING Cedar Discovery® Perfection D7 - Russet Red SECONDARY SIDING ACCENTS Fascia, Soffit and Trim Sheet - Wicker REPLACEMENT WINDOWS 5000 Series - Casement, Double Hung & Picture Windows - Ivory STONE - FENCE-RAIL - GUTTER Gutter - Wicker	<b>the BUCKSKIN</b> COLLECTION PAGE 27 Cedar Discovery® T5 - Wicker Quest® D4 - Wicker Fascia, Soffit and Trim Sheet - Cameo / Raised Panel Shutters - Red 5000 Series - Double Hung Windows - Ivory Ply Gem Stone Shadow LedgeStone - Chardonnay Gutter - Cameo
<b>HOME 10</b>	<b>the STUDIO</b> COLLECTION PAGE 28 PRIMARY SIDING Quest® D4 - Everest SECONDARY SIDING Board+Batten Designer Series™ - Classic Cream ACCENTS Fascia, Soffit and Trim Sheet - Wicker REPLACEMENT WINDOWS 5000 Series - Casement & Picture Windows - Ivory STONE Ply Gem Stone Brick - Clarion Colonial FENCE-RAIL - GUTTER Gutter - Wicker	<b>the MEADOWBROOK</b> COLLECTION PAGE 29 Quest® D4 - Pebblestone Clay - Fascia, Soffit and Trim Sheet - Rugged Canyon 5000 Series - Casement Windows - Sandstone Ply Gem Stone Shadow LedgeStone - Chardonnay Gutter - Rugged Canyon
<b>HOME 11</b>	<b>the SUFFOLK</b> COLLECTION PAGE 30 PRIMARY SIDING Quest® D4 - Deep Granite SECONDARY SIDING Ovation™ T3 - Silver Grey ACCENTS Fascia, Soffit and Trim Sheet - Silver Grey / Board and Batten Shutters - Vineyard Red REPLACEMENT WINDOWS 5000 Series - Double Hung & Sliding Windows - White STONE Ply Gem Stone Cut Cobblestone - Winfield FENCE-RAIL - GUTTER Gutter - Silver Grey	<b>the AUTUMN</b> COLLECTION PAGE 31 Cedar Discovery® Perfection T5 - Cedar - Fascia, Soffit and Trim Sheet - White / Board and Batten Shutters - Red 5000 Series - Casement, Sliding & Picture Windows - Ivory Ply Gem Stone Shadow LedgeStone - Shade Mountain Gutter - White
<b>HOME 12</b>	<b>the QUEEN ANNE</b> COLLECTION PAGE 32 PRIMARY SIDING Quest® D4 - Colonial Yellow SECONDARY SIDING - ACCENTS Fascia, Soffit and Trim Sheet - White / Mantels, Pediments, and Columns - White / Raised Panel Shutters - Black REPLACEMENT WINDOWS 5000 Series - Sliding Windows - White STONE Ply Gem Stone Brick - Fulton Colonial FENCE-RAIL Ply Gem Rail - White with Custom Design GUTTER Gutter - White	<b>the SUNSET</b> COLLECTION PAGE 33 Quest® D4 - Woodland Green Cedar Discovery® Perfection D7 - Russet Red / Pro-Select® D5 Vertical Siding - Wicker Fascia, Soffit and Trim Sheet - Wicker - Ply Gem Stone Shadow LedgeStone - Chardonnay Ply Gem Standard Rail - Khaki Gutter - Wicker
<b>HOME 13</b>	<b>the ELKHORN</b> COLLECTION PAGE 34 PRIMARY SIDING Board+Batten Designer Series™ - Sandtone SECONDARY SIDING Quest® D4 - Natural Cedar ACCENTS Fascia, Soffit and Trim Sheet - Classic Cream REPLACEMENT WINDOWS 5000 Series - Casement & Picture Windows - Black STONE - FENCE-RAIL - GUTTER Gutter - Cameo	<b>the PINE</b> COLLECTION PAGE 35 Quest® D5 - Scottish Thistle / Board+Batten Designer Series™ - Scottish Thistle Cedar Discovery® Hand-Split Shake - Cedar Fascia, Soffit and Trim Sheet - White - Ply Gem Stone Shadow LedgeStone - Easton Ply Gem Contour Rail - White with Custom Post Gutter - White
<b>HOME 14</b>	<b>the SOHO</b> COLLECTION PAGE 36 PRIMARY SIDING Board+Batten Designer Series™ - Harbor Grey SECONDARY SIDING Cedar Discovery® Half-Round - Harbor Grey ACCENTS Fascia, Soffit and Trim Sheet - White REPLACEMENT WINDOWS 5000 Series - Picture & Architectural Shape Windows - White STONE Ply Gem Stone Brick - Fulton Colonial FENCE-RAIL - GUTTER Gutter - White	<b>the LODGE</b> COLLECTION PAGE 37 Cedar Discovery® Perfection D7 - Pebblestone Clay Board+Batten Designer Series™ - Pebblestone Clay / Quest® D4 - Pebblestone Clay Fascia, Soffit and Trim Sheet - Pebblestone Clay / Board and Batten Shutters - Spanish Moss 5000 Series - Awning, Picture & Architectural Shape Windows - Sandalwood Ply Gem Stone Tuscan Fieldstone - Shenandoah Gutter - Pebblestone Clay

\*The products listed in this field guide are approximations of colors and styles represented in the renderings. Consult the *Mastic Specification Guide* and product color samples for actual product specifications.



## HOME NO.

## REFRESH

HOME 15	the <b>SLATE</b> COLLECTION	PAGE 40
PRIMARY SIDING	Quest® D4 - Lakeshore Fern	
SECONDARY SIDING	Cedar Discovery® Perfection T5 - Pebblestone Clay	
ACCENTS	Fascia, Soffit and Trim Sheet - Cameo	
REPLACEMENT WINDOWS	5000 Series - Double Hung, Sliding, Casement & Architectural Shape Windows - White	
STONE	-	
FENCE+RAIL	Ply Gem Standard Rail - White / Solid Privacy Fence - Woodland Select Weathered Cedar	
GUTTER	Gutter - Cameo	
HOME 16	the <b>TELLURIDE</b> COLLECTION	PAGE 42
PRIMARY SIDING	Quest® D4 - Montana Suede	
SECONDARY SIDING	Board+Batten Designer Series™ - Sandtone	
ACCENTS	Fascia, Soffit and Trim Sheet - Rugged Canyon / Board and Batten Shutters - Brown	
REPLACEMENT WINDOWS	5000 Series - Casement & Picture Windows - Bronze	
STONE	Ply Gem Stone Shadow LedgeStone - Chardonnay	
FENCE+RAIL	-	
GUTTER	Gutter - Rugged Canyon	
HOME 17	the <b>ADAMS</b> COLLECTION	PAGE 44
PRIMARY SIDING	Quest® D4 - Sedona Red	
SECONDARY SIDING	-	
ACCENTS	Fascia, Soffit and Trim Sheet - White / Window & Garage Mantels - White	
REPLACEMENT WINDOWS	5000 Series - Double Hung Windows - White	
STONE	Ply Gem Stone Brick - Monroe Colonial	
FENCE+RAIL	-	
GUTTER	Gutter - White	
HOME 18	the <b>STAINLESS</b> COLLECTION	PAGE 46
PRIMARY SIDING	Structure® Home Insulation System™ D6 - Silver Grey	
SECONDARY SIDING	Ovation™ T3 - Almond	
ACCENTS	Fascia, Soffit and Trim Sheet - Cameo	
REPLACEMENT WINDOWS	5000 Series - Casement & Picture Windows - Sandalwood	
STONE	Ply Gem Stone Brick - Clarion Colonial	
FENCE+RAIL	-	
GUTTER	Gutter - Cameo	
HOME 19	the <b>SAN ANDREAS</b> COLLECTION	PAGE 48
PRIMARY SIDING	Cedar Discovery® Perfection D7 - Victorian Grey	
SECONDARY SIDING	Quest® D5 - Harbor Grey	
ACCENTS	Fascia, Soffit and Trim Sheet - Cameo	
REPLACEMENT WINDOWS	5000 Series - Double Hung & Picture Windows - Black	
STONE	Ply Gem Stone Cobblestone - Shade Mountain	
FENCE+RAIL	-	
GUTTER	Gutter - Cameo	
HOME 20	the <b>GULLWING</b> COLLECTION	PAGE 50
PRIMARY SIDING	Quest® D5 - Pebblestone Clay	
SECONDARY SIDING	Cedar Discovery® Half-Rounds - Victorian Grey / Board+Batten Designer Series™ - White	
ACCENTS	Fascia, Soffit and Trim Sheet - White / Raised Panel Shutters - Dark Spruce	
REPLACEMENT WINDOWS	5000 Series - Casement & Picture Windows - White	
STONE	Ply Gem Stone Brick - Chester Colonial	
FENCE+RAIL	-	
GUTTER	Gutter - White	
HOME 21	the <b>MAPLE</b> COLLECTION	PAGE 52
PRIMARY SIDING	Quest® D4 - Pebblestone Clay	
SECONDARY SIDING	Cedar Discovery® Perfection D7 - Pebblestone Clay	
ACCENTS	Fascia, Soffit and Trim Sheet - White	
REPLACEMENT WINDOWS	5000 Series - Casement & Picture Windows - Ivory	
STONE	Ply Gem Stone Brick - Clarion Colonial / LedgeStone - Chardonnay	
FENCE+RAIL	Ply Gem T-Rail with Custom Post - White	
GUTTER	Gutter - White	
HOME 22	the <b>CABIN</b> COLLECTION	PAGE 54
PRIMARY SIDING	Cedar Discovery® Perfection D7 - Pebblestone Clay	
SECONDARY SIDING	Quest® D5 - Pebblestone Clay	
ACCENTS	Fascia, Soffit and Trim Sheet - Wicker / Raised Panel Shutters - Winestone	
REPLACEMENT WINDOWS	5000 Series - Double Hung Windows - Ivory	
STONE	Ply Gem Stone Brick - Fulton Colonial	
FENCE+RAIL	-	
GUTTER	Gutter - Wicker	

## ENHANCED

the <b>DEER VALLEY</b> COLLECTION	PAGE 41
Cedar Discovery® Perfection T5 - Montana Suede	
-	
Fascia, Soffit and Trim Sheet - White / Perfect Corners - Montana Suede	
5000 Series - Double Hung, Casement & Picture Windows - White	
Ply Gem Stone Shadow LedgeStone - Shade Mountain	
Ply Gem Standard Rail - White / Solid Privacy Woodland Select - Cedar	
Gutter - White	
the <b>GRANITE</b> COLLECTION	PAGE 43
Cedar Discovery® Perfection D7 - Quiet Willow / Quest® D5 - Scottish Thistle	
Board+Batten Designer Series™ - Scottish Thistle	
Fascia, Soffit and Trim Sheet - Desert Sand	
-	
Ply Gem Stone Shadow LedgeStone - Easton	
Ply Gem Standard Rail - Pearl	
Gutter - Desert Sand	
the <b>SANDSTONE</b> COLLECTION	PAGE 45
Cedar Discovery® Perfection D7 - Sandtone	
Quest® D4 - Montana Suede	
Fascia, Soffit and Trim Sheet - Desert Sand / Board and Batten Shutters - Winestone / Monticello® Columns - White	
5000 Series - Double Hung Windows - White	
Ply Gem Stone Shadow LedgeStone - Bradford	
Ply Gem Standard Rail - Sandtone	
Gutter - Desert Sand	
the <b>PEWTER</b> COLLECTION	PAGE 47
Board+Batten Designer Series™ - Harbor Grey	
Quest® D4 - Deep Granite	
Fascia, Soffit and Trim Sheet - White / Board and Batten Shutters - Black	
5000 Series - Double Hung Windows - White	
Ply Gem Stone Cut Cobblestone - Winfield	
-	
Gutter - White	
the <b>DAWN</b> COLLECTION	PAGE 49
Quest® D5 - Sandtone / Board+Batten Designer Series™ - Sandtone	
Cedar Discovery® Perfection D7 - Sandtone	
Fascia, Soffit and Trim Sheet - Wicker / Board and Batten Shutters - Red	
5000 Series - Double Hung Windows - Ivory	
Ply Gem Stone Shadow LedgeStone - Bradford	
Ply Gem Contour Rail - Khaki with Custom Post	
Gutter - Wicker	
the <b>SAGE</b> COLLECTION	PAGE 51
Cedar Discovery® D7 - Sandtone	
-	
Fascia, Soffit and Trim Sheet - Almond, / Board and Batten Shutters - Spanish Moss	
5000 Series - Casement, Double Hung & Picture Windows - Ivory	
Ply Gem Stone Brick - Clarion Colonial / Cut Cobblestone - Winfield	
-	
Gutter - Almond	
the <b>LOREDO</b> COLLECTION	PAGE 53
Cedar Discovery® D7 - Cape Grey	
-	
Fascia, Soffit and Trim Sheet - Silver Grey / Garage Mantel - Painted to Match Silver Grey	
5000 Series - Double Hung & Architectural Shape Windows - Ivory	
Ply Gem Stone Cut Cobblestone - Winfield	
-	
Gutter - Silver Grey	
the <b>BRONZE</b> COLLECTION	PAGE 55
Cedar Discovery® Perfection D7 - Deep Granite	
-	
Fascia, Soffit and Trim Sheet - White / Raised Panel Shutters - Winestone / Perfect Corners - Deep Granite	
5000 Series - Double Hung & Architectural Shape Windows - White	
Ply Gem Stone Shadow LedgeStone - Shade Mountain	
-	
Gutter - White	





### THE PLY GEM PROMISE

Mastic branded products are backed by Ply Gem—a 75-year leader in pioneering performance home exteriors, with a superior warranty for exactly the home you want for decades to come.



**mastic.com**  
**800 962 6973**

PLY GEM SIDING GROUP  
2600 GRAND BLVD. SUITE 900  
KANSAS CITY, MO 64108



PLY GEM RESERVES THE RIGHT TO ALTER, MODIFY OR DELETE ITEMS FROM TIME TO TIME WITHOUT NOTICE. DUE TO PRINTING LIMITATIONS, COLORS MAY NOT BE EXACTLY AS SHOWN. CONTACT YOUR DISTRIBUTOR OR SALES REPRESENTATIVE FOR ACTUAL PRODUCT AND COLOR SAMPLES. PLY GEM, THE PLY GEM LOGO, THE PLY GEM BADGE AND MASTIC ARE TRADEMARKS OF PLY GEM INDUSTRIES, INC. AND/OR ITS AFFILIATES. © 2019 PLY GEM INDUSTRIES, INC.

ALL PRODUCTS MADE IN THE U.S.A.

7605129991102/REVA/MS/CG/0319